

Homecare

In 2018/19 we commissioned c.1,000,000 Hours...



...to support around **2,000 people**



... at a cost of approximately



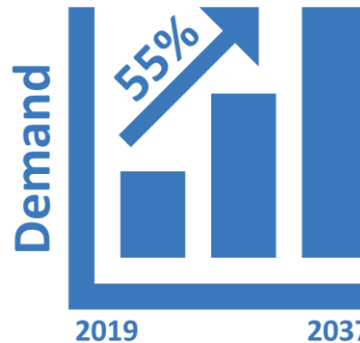
95% homecare providers rated good or outstanding by the CQC



By 2031, the number of people over the age of 65 will rise by **44%...**



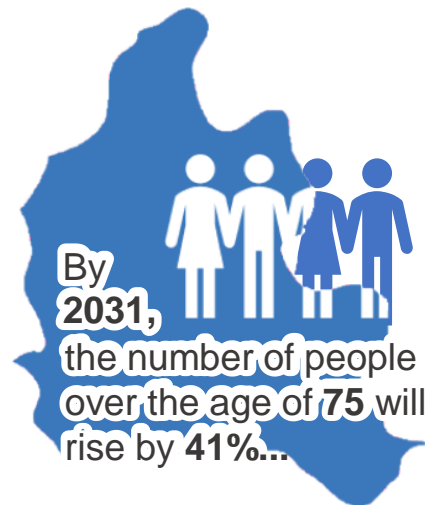
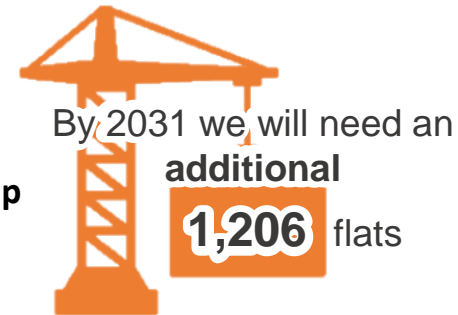
...people over 85 will rise by **55%**



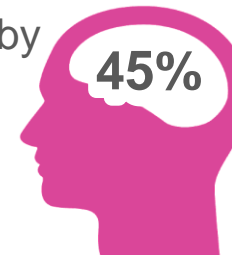
108 homecare agencies

Visit www.oxfordshire.gov.uk/infoproviders to read our Market Position Statement for 2019-22. It sets out our current purchasing practices and commissioning plans, our understanding of trends and demand, and how that demand may change in the future.

Extra Care Housing



...The number of
people living with
dementia is forecast
to rise by



Visit www.oxfordshire.gov.uk/infoproviders to read our Market Position Statement for 2019-22. It sets out our current purchasing practices and commissioning plans, our understanding of trends and demand, and how that demand may change in the future.

Care Homes



We are the **largest**
single purchaser
in the county

£100m
per year

88%
Care Homes rated
good or outstanding
by the CQC

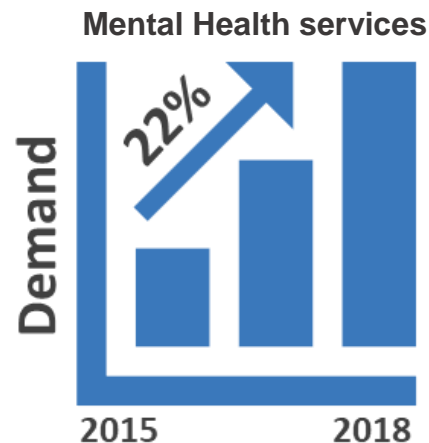


52% ↑

Use **Dynamic Purchasing**
System (DPS)
Soon, most of our placements
will be made with **providers**
registered on this system

Visit www.oxfordshire.gov.uk/infoproviders to read our Market Position Statement for 2019-22. It sets out our current purchasing practices and commissioning plans, our understanding of trends and demand, and how that demand may change in the future.

Mental Health & Supported Living



Visit www.oxfordshire.gov.uk/infoproviders to read our Market Position Statement for 2019-22. It sets out our current purchasing practices and commissioning plans, our understanding of trends and demand, and how that demand may change in the future.