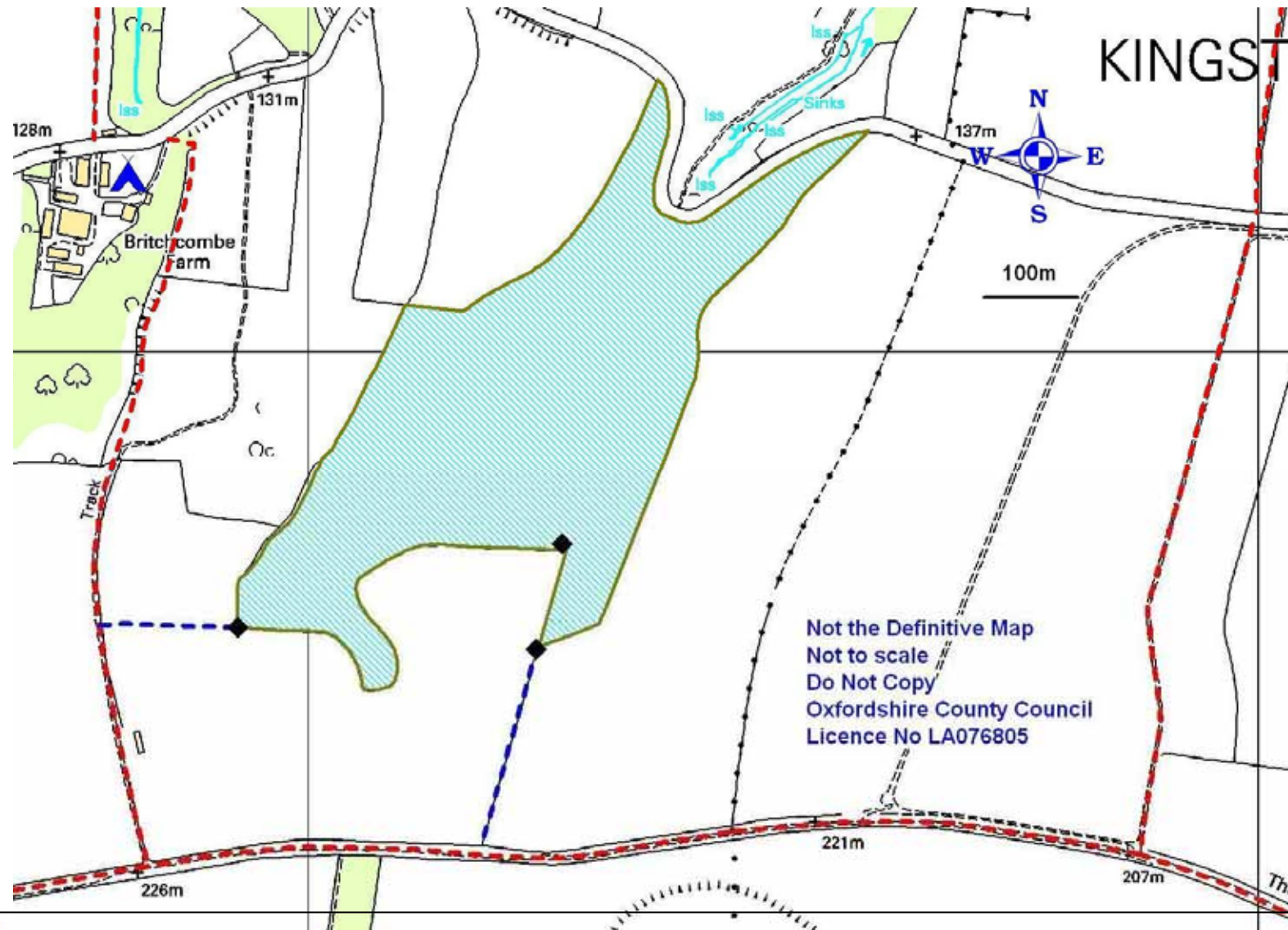




Access Land - Britchcombe



Welcome to this area of access land. This map shows access land in pale blue, and is derived from the Natural Environment's conclusive map of access land. This site is a Site of Special Scientific Interest, of particular importance for its lowland chalk downland and associated flora.

Countryside Code

- Be safe, plan ahead and follow any signs
- Protect plants and animals
- Leave gates and property as you find them
- Take your litter home
- Keep dogs under close control
- Consider other people



 Limits of access land  Public rights of way

 Access point (gate, kissing gate or stile)  No access here please

For more information
Natural England Open access website
www.naturalengland.org.uk/ourwork/enjoying/places/openaccess
Oxfordshire County Council Countryside Service 01865 810226
www.oxfordshire.gov.uk/accessland



This sign says the land is access land

- ### Local Information
- Dogs to be kept on lead when livestock are grazing and during the bird nesting season (April to August)
 - Please ensure gates are closed and latched shut
 - You cannot cycle, ride a horse, ride a motorcycle or any motor vehicle on this land
 - From time to time access may have to be restricted to protect livestock, wildlife, or You, so please take notice of any signs saying that land is closed

