



Appendix 1: Oxford City Concordance Table

Oxford City				Oxfordshire Concordance					
Broad Code	Broad Type	HLC Type Code	HLC Type	OCC Code (1)	OCC Code (2)	OCC Code (3)	OCC HLT (1)	OCC HLT (2)	OCC HLT (3)
0	Civic	ve	Schools & Colleges pre-1945	Ef			Civil Provision - Educational Facility		
		vs	Schools & Colleges post-1945	Ef			Civil Provision - Educational Facility		
		vm	Medical pre-1945	Hf			Civil Provision - Health Care Facility		
		vn	Medical post-1945	Hf			Civil Provision - Health Care Facility		
		vl	Legal	Goc	PD	Pr	Civil Provision - Gov Office and Civic Centre	Civil Provision - Police Station	Civil Provision - Prison
		vc	Civic	Goc			Civil Provision - Gov Office and Civic Centre		
		hs	Hospitals, Schools, Universities	Hf	Ef		Civil Provision - Health Care Facility	Civil Provision - Educational Facility	
		gc	Government & Civic	Goc			Civil Provision - Gov Office and Civic Centre		
1	Commercial	mhe	Hotels pre-1945	Uhot			Urban - Hotel		
		mhl	Hotels post-1945	Uhot			Urban - Hotel		
		mim	Indoor Market	MRK			Urban - Market		
		rmin	Historic Shopping pre-19th century	Shp			Commercial - Shops		
		mbp	Business Park	BP			Commercial - Business Park		
		sta	Stables	PK			Enclosure - Paddocks and Stables		
		myd	Yard	SCY	Yyd		Industry - Scrap Yard	Industry - Timber Yard	
		mbe	Banks pre-1945	Bnk			Commercial - Bank		
		bpon	Banks post-1945	Bnk			Commercial - Bank		
		mk	Market	MRK			Urban - Market		
		mh	Inns	UPH			Urban - Public House		
		mp	Pubs post 1800	UPH			Urban - Public House		
		ms	Modern Shops	Shp			Commercial - Shops		



		mo	Office post-1945	Off			Commercial - Offices		
		msh	Office/Commercial	OfCm			Commercial - Office/Commercial		
		mso	Mixed use offices and shops	OfCm			Commercial - Office/Commercial		
		mt	Retail Park/Mall	SHC			Commercial - Shopping Centre		
		ng	Nurseries	NGC			Orchard and Hort - Nursery/ Garden Centre		
		sh	Shopping Centre	SHC			Commercial - Shopping Centre		
2	Industrial	ipw	Printing Works	Pi			Industry - Processing Industry		
		icf	Car Plant/Factory	MAN			Industry - Manufacturing		
		eng	Engineering	Pi	MAN		Industry - Processing Industry	Industry - Manufacturing	
		im	Malting/Brewery	MAN			Industry - Manufacturing		
		ik	Workhouse	Wh			Civil Provision - Workhouse		
		iy	Tannery	Pi			Industry - Processing Industry		
		if	Factories	MAN			Industry - Manufacturing		
		it	Watermills	MLC			Industry - Mill Complex		
		ir	Railway Works	Ry			Communication - Rail Transport Sites		
		il	Clay Industry/Brickworks	BK			Industry - Brickworks		
		ih	Historic Extractive	ME			Industry - Extractive Works		
		in	Industrial Units	IA			Industry - Industrial Estate		
		id	Industrial (disused)	IA			Industry - Industrial Estate		
		me	Mineral Extraction	ME			Industry - Extractive Works		
		mf	Flooded Mineral Sites	FEL			Industry - Flooded Extractive Pits		
3	Religious	rsc	Church pre-1086	Raf			Civil Provision - Religious and Funerary		



		rcm	Church post-1800	Raf			Civil Provision - Religious and Funerary		
		rcc	City Cemetery	Raf			Civil Provision - Religious and Funerary		
		rce	Detached C of E Cemetery	Raf			Civil Provision - Religious and Funerary		
		rct	Minster	Raf			Civil Provision - Religious and Funerary		
		rc	Church pre-1800	Raf			Civil Provision - Religious and Funerary		
		rn	Non-conformist Chapel	Raf			Civil Provision - Religious and Funerary		
		rt	Modern Monastic	Raf			Civil Provision - Religious and Funerary		
		rp	Place of Worship	Raf			Civil Provision - Religious and Funerary		
		rq	Mosque	Raf			Civil Provision - Religious and Funerary		
		ry	Cemetery	Raf			Civil Provision - Religious and Funerary		
4?	Residential pre-1800	sh	Settlement pre-1800	HUC			Urban Settlement - Historic Urban Core		
		sg	Irregular Plots	HUC			Urban Settlement - Historic Urban Core		
		sb	Burgage type plots	BUP			Urban Settlement - Burgage Plots		
		sn	Narrow Plots	HUC			Urban Settlement - Historic Urban Core		
		man	Mansions post medieval	HUC			Urban Settlement - Historic Urban Core		
		sth	Townhouses	HUC			Urban Settlement - Historic Urban Core		
		sts	Mixed Townhouses and Shops	HUC			Urban Settlement - Historic Urban Core		



5?	Residential 1800-1945	se	Settlement pre-1880	Cty			Urban Settlement - City		
		st	Settlement post-1880	Cty			Urban Settlement - City		
		sa	Victorian Villas	Cty			Urban Settlement - City		
		sv	Victorian Terraces	Cty			Urban Settlement - City		
		svt	Victorian Townhouses	Cty			Urban Settlement - City		
		svs	Mixed shops and residential	Shp			Commercial - Shop		
		dev	Villas 1900-1919	Cty			Urban Settlement - City		
		mch	Middle class housing 1900-1919	Cty			Urban Settlement - City		
		so	Terrace/Cottages 1900-1919	Cty			Urban Settlement - City		
		dva	Villas 1919-1945	Cty			Urban Settlement - City		
	sw	Middle class housing 1919-1945	Cty			Urban Settlement - City			
6	Residential 1945-1980	su	Social Housing	Cty			Urban Settlement - City		
		sr	Private Housing	Cty			Urban Settlement - City		
		cc	Caravan Park	UCV			Urban Settlement - Caravan and Camp site		
		sf	Flats	Cty			Urban Settlement - City		
7	Residential post-1980	ss	Modern Infill	Cty			Urban Settlement - City		
8	Utilities	ug	Gas	UT			Civic Amenities - Utilities		
		rw	Reservoir	RR			Civic Amenities - Reservoir		
		ut	Utilities	UT			Civic Amenities - Utilities		
9	Enclosure	mw	Meadow	ROG			Unenclosed Land - Rough Ground		



		ef	pre-18th century Fossilised Strips	AF			Enclosure - Ancient Enclosure		
		ei	pre-18th century Irregular	AF			Enclosure - Ancient Enclosure		
		er	pre-18th century Regular	AF			Enclosure - Ancient Enclosure		
		em	Crofts & Tofts	CF			Enclosure - Crofts (medieval & post-medieval)		
		dp	Medieval Deer Parks	DPK			Orn - Deer Park		
		of	Open Field	FS			Enclosure - Open Field System		
		ee	Parliamentary Enclosure	PA			Enclosure - Planned Enclosure		
		es	Subsequent Parliamentary Enclosure	PA			Enclosure - Planned Enclosure		
		en	19th century Enclosure	RE	AM		Enclosure - Reorganised Enclosure	Enclosure - Prairie / Amalgamated Enclosure	
		et	20th century Enclosure	RE	AM		Enclosure - Reorganised Enclosure	Enclosure - Prairie / Amalgamated Enclosure	
11	Open	cm	Commons	ROG			Unenclosed Land - Rough Ground		
		rl	Riverine Landscape	ROG			Unenclosed Land - Rough Ground		
?	Water	rr	Rowing Lake	Row			Recreation - Rowing Lake		
		ls	Sports/Fitness	OL			Recreation - Other Leisure Facilities		
12	Recreation	le	Leisure/Entertainment	OL			Recreation - Other Leisure Facilities		
		lp	Public Park	PRK			Recreation - Public Park		
		lg	Urban Gardens	UG			Orchard and Hort - Urban Garden		
		ag	Allotments	ALO			Orchard and Hort - Allotment		
		pp	Historic Parks/College Gardens	PRK	Col	CP	Recreation - Public Park	Civil Provision - Oxford College	Recreation - Country Park
		Inr	Nature Reserve	NR			Recreation - Nature reserve		



		tr	recreational landscape	PRK			Recreation - Public Park		
		tg	Golf Course	GF			Recreation - Golf Course		
13	Military	twm	Town Defences - Medieval	PM			Military - Defence site		
		tc	Town Defences - Civil War	PM			Military - Defence site		
		td	Castle	CT			Military - Castle		
		tb	Barracks	Bar			Military - Barracks		
16	Communications	ci	Water Feature	Rv			Water - River		
		cn	Canal	CL			Communication - Canals and Locks		
		cw	Canal Infrastructure	CL			Communication - Canals and Locks		
		cg	Bridge	Brg			Communication - Bridge		
		cd	Medieval Long Distance Route	Roa			Communication - Road		
		ch	Medieval Medium Distance Route	Roa			Communication - Road		
		cal	alley	Roa			Communication - Road		
		cl	Lane	Roa			Communication - Road		
		cb	Back Lane	Roa			Communication - Road		
		cmo	Modern road	Roa			Communication - Road		
		csq	Square	Roa			Communication - Road		
		cp	Car Park	CPk			Communication - Car Park		
		cr	Railway	Ry			Communication - Rail Transport Sites		
		cs	Rail Station	Ry			Communication - Rail Transport Sites		
		cp	Transport Infrastructure/Links	Ry	Roa	Mrd	Communication - Rail Transport Sites	Communication - Road	Communication - Main Road
		mr	Major Road Scheme	Mrd			Communication - Main Road		
10	Woodland	wa	Ancient	AW			Woodland - Ancient Woodland		
		wo	Orchards	Orch			Orchard and Hort - Orchard		
		ws	Secondary	CW			Woodland - Secondary Woodland		
		wp	Plantations	PW			Woodland - Plantation		



15	Colleges	uom	Medieval Colleges	Col			Civil Provision - Oxford College		
		uopm	Post-Medieval Colleges	Col			Civil Provision - Oxford College		
		uon	19th Century Colleges	Col			Civil Provision - Oxford College		
		uot	20th Century Colleges	Col			Civil Provision - Oxford College		
		uoh	Former college halls	Col			Civil Provision - Oxford College		
		uol	University of Oxford Libraries	EF			Civil Provision - Education Facility		
		uou	University of Oxford Museums	EF			Civil Provision - Education Facility		
		uos	University of Oxford Structures	EF			Civil Provision - Education Facility		
		uor	University of Oxford Sports Areas	PS			Recreation - Sports Facilities		
		unm	Post-1800 Universities	EF			Civil Provision - Education Facility		

Please note: those Oxfordshire HLC Types highlighted yellow were types created for the integration of the city's data. These types are, therefore, only found within the district of Oxford City.



Appendix 2: Database Structure

Description Tab

Field	Description
Unique Identifier	A reference number unique to each record automatically generated in HBSMR. This number is the same as that used within MapInfo for the associated polygon
Broad Type	The higher level landscape type to which the record has been assigned
Type	The more specific HLC Type to which the record has been assigned
Full Type Code	Alphabetic code which combines the Broad and HLC Type separated by a hyphen
Confidence	<ul style="list-style-type: none">• Certain• Probable• Possible Used to indicate confidence in the assigned HLC Type. This typically relates to clarity of sources.
Name	Name related to polygon. Typically used for settlements, but also for named landscape features such as woods or parks.
National Grid Reference (NGR)	Ten figure grid reference for the centre of the polygon derived from the linked MapInfo polygon
Map	1:10,000 Ordnance Survey Map reference derived from the NGR
Area (Ha)	Total area of the MapInfo polygon, given in hectares
Summary/Description	Two text fields used to summarise current and previous character and to describe additional details regarding character and development of landscape
Period of Origin of Current Type: Year From/To	The date of origin of the current HLC Type. Defined by the date of the earliest map source on which the type appears
Period of Origin of Current Type: Period From/To	Period range based on the Year From/To specified by user. Defined by Historic England's period categories



Attributes Tab

Broad Type	Attribute Parent Group	Attribute
Civic Amenities	Status	Active
		Recently Abandoned/Disused
		Historically Abandoned/Disused
	Period	(Historic England Period List)
	Size	Small
		Medium
		Large
	Civic Amenity Sub Type	Incineration Plant
		Landfill Site
		Recycling Site
		Natural Gas Production Site
		Energy Industry Site
	Water Works	
Civil Provision	Status	Active
		Recently Abandoned/Disused
		Historically Abandoned/Disused
	Period	(Historic England Period List)
	Size	Small
		Medium
		Large
	Civil Provision Sub Type	Fire Station
		Civic Centre
		Nursing Home
		Cemetery
		Place of Worship
		Art Gallery
		Museum
		School
		College
University		
Hospital/Health Centre		
Workhouse		
Court/Police Station		
Commercial	Status	Active
		Recently Abandoned/Disused
		Historically Abandoned/Disused
	Period	(Historic England Period List)
	Size	Small
		Medium
		Large
	Commercial Sub Type	Science Park
Conference Centre		
Supermarket		
Fish Farm		
Communication	Status	Active
		Recently Abandoned/Disused
		Historically Abandoned/Disused
	Period	(Historic England Period List)
	Size	Small



		Medium
		Large
Enclosure	Boundary Loss	Major Gain (>40%)
		Minimal Gain (<40%)
		Major Loss (>40%)
		Minimal Loss (<40%)
		No Loss
	Period	(Historic England Period List)
	Size	Small (<2ha)
		Medium (2-10ha)
		Large (>10ha)
	Enclosure Type	Parliamentary Enclosure
		Enclosed Furlong
		Enclosed Strip
		Flood Plain/Enclosure of River Meadow
		Enclosure of Open Field
		Pre-18th Century Enclosure
		Reorganised Planned Enclosure
		Reordered Enclosure
		Filled Extractive Pit
		Cleared Woodland
		Enclosure of Parkland/Woodland Pasture
		Degree of Subdivision
	Partially Enclosed	
	Unenclosed	
	Defined by Surrounding Enclosures	
	Perimeter Morphology	Curvilinear
		Not Applicable
		Rectilinear
		Straight
		Irregular
		Mixed
		Regular
		Sinuous
Internal Morphology	Semi-Straight	
	Straight	
	Curving	
	Rectilinear	
	Sinuous	
	Not Applicable	
	Irregular	
Ridge and Furrow	Dog Leg Morphology	
	Earthwork of Reversed S-Shape Ridge and Furrow	
	Earthwork of Straight Ridge and Furrow	
	Not Applicable/Absent	
	Reversed S-Shape Ridge and Furrow	
	Straight Ridge and Furrow	
Industry	Status	Active
		Recently Abandoned/Disused
		Historically Abandoned/Disused



	Period	(Historic England Period List)
	Size	Small
		Medium
		Large
	Industry Sub Type	Windmill
		Watermill
		Wind Farm
		Processing Industry
		Nuclear
		Car
		Power Station
		Business Park
		Depot
		Quarry
	Material	Chemical
		Gravel
		Limestone
		Stone
		Wood
		Coal
		Gas
		Precious Metal
		Metal
		Clay
	Sand	
Military	Status	Active
		Recently Abandoned/Disused
		Historically Abandoned/Disused
	Period	(Historic England Period List)
Size	Small	
	Medium	
	Large	
Orchards and Horticulture	Period	(Historic England Period List)
	Size	Small
		Medium
	Large	
Ornamental	Status	Active
		Recently Abandoned/Disused
		Historically Abandoned/Disused
	Period	(Historic England Period List)
	Size	Small
		Medium
		Large
	Ornamental Sub Type	Landscape Park
		Ornamental Lake
		Ornamental Pond
Arboretum		
Formal Garden		
Kitchen Garden		
Ornamental Garden		
Pleasure Garden		
Recreation	Status	Active



		Recently Abandoned/Disused	
		Historically Abandoned/Disused	
		Period	(Historic England Period List)
		Size	Small
			Medium
			Large
		Ornamental Sub Type	Boat House
			Country Park
			Leisure Centre
			Sports Ground
			Spa
			Stadium
			Equestrian Centre
			Racing Sports Site
			Recreation Ground
Lake/Pond used for Recreational Activities			
Gallops			
Activity Centre			
Kennels			
Rural Settlement	Status	Active	
		Recently Abandoned/Disused	
		Historically Abandoned/Disused	
	Period	(Historic England Period List)	
	Size	Small	
		Medium	
		Large	
	Settlement Type	Urban	
		Rural	
	Settlement Nature	New Town (Post-World War II)	
		Cluster	
		Country Town	
		Housing Estate	
		Linear Expansion	
		Market Town	
Settlement Infill			
Settlement Expansion			
Common Edge			
Small Farm Cluster			
Isolated Farmstead			
Interrupted Row			
Dwelling			
Row			
Model Farm			
Settlement Form	Cluster		
	Flats		
	Planned		
	Row		
	Terraced		
	Detached		
Semi-Detached			
Unenclosed Land	Period	(Historic England Period List)	



	Size	Small (<2ha)
		Medium (2-10ha)
		Large (>10ha)
	Degree of Subdivision	Enclosed
		Partially Enclosed
		Unenclosed
		Defined by Surrounding Enclosures
	Ridge and Furrow	Dog Leg Morphology
		Earthwork of Reversed S-Shape Ridge and Furrow
		Earthwork of Straight Ridge and Furrow
		Not Applicable/Absent
		Reversed S-Shape Ridge and Furrow
		Straight Ridge and Furrow
Urban Settlement	Status	Active
		Recently Abandoned/Disused
		Historically Abandoned/Disused
	Period	(Historic England Period List)
	Size	Small
		Medium
		Large
	Settlement Type	Urban
		Rural
	Settlement Nature	New Town (Post-World War II)
		Cluster
		Country Town
		Housing Estate
		Linear Expansion
		Market Town
		Settlement Infill
		Settlement Expansion
		Common Edge
		Small Farm Cluster
		Isolated Farmstead
		Interrupted Row
Dwelling		
Row		
Model Farm		
Settlement Form	Cluster	
	Flats	
	Planned	
	Row	
	Terraced	
	Detached	
	Semi-Detached	
Water and Valley Floor	Status	Active
		Recently Abandoned/Disused
		Historically Abandoned/Disused
	Period	(Historic England Period List)
	Size	Small
		Medium
		Large
	Water Form	Floodplain



		Open Water
		Raised Bog/Moss
		Reservoir
		Lake
		Marl Pits
		Rectilinear Water Meadow
		Sinuuous Water Meadow
		Mere
		Pond
		Water Course
	Degree of Subdivision	Enclosed
		Partially Enclosed
		Unenclosed
		Defined by Surrounding Enclosures
	Perimeter Morphology	Curvilinear
		Not Applicable
		Rectilinear
		Straight
		Irregular
		Mixed
Regular		
Internal Morphology	Semi-Straight	
	Straight	
	Curving	
	Rectilinear	
	Sinuuous	
	Not Applicable	
Woodland	Woodland Make Up	Coniferous
		Broad Leaf
		Felled
		Mixed
		Shrub
		Young Trees
		Unknown
	Period	(Historic England Period List)
	Size	Small
		Medium
		Large
	Woodland Form	Continuous (since 1600 AD)
		Semi-Natural
		Replanted
Degree of Subdivision	Enclosed	
	Partially Enclosed	
	Unenclosed	
	Defined by Surrounding Enclosures	
Perimeter Morphology	Curvilinear	
	Not Applicable	
	Rectilinear	
	Straight	
	Irregular	



		Mixed
		Regular
		Sinuous
	Internal Morphology	Semi-Straight
		Straight
		Curving
		Rectilinear
		Sinuous
		Not Applicable
		Irregular



Appendix 3: Attribute Table Structure

Field	Description
HLCUID	A reference number unique to each polygon. This number is the same as that used within HBSMR for the associated record.
Name	Name related to polygon. Typically used for settlements, but also for named landscape features such as woods or parks.
FullTypeCode	Alphabetic code which combines the Broad and HLC Type separated by a hyphen
BroadType	The higher level landscape type to which the polygon has been assigned
HLCType	The more specific HLC Type to which the polygon has been assigned
YearFrom	The date of origin of the current HLC Type. Defined by the date of the earliest map source on which the type appears
YearTo	
Status	<ul style="list-style-type: none"> • Active • Recently Abandoned/Disused • Historically Abandoned/Disused
Summary	Two text fields used to summarise current and previous character and to describe additional details regarding character and development of the landscape
Description	
Period	Period to which the predominant character of the current type dates. As defined by the Historic England Period List.
CreatedBy	Name of creator and date on which the polygon was created
AmendedBy	Name of person who amended the record and the date
Size	Size of units. For example, individual fields within an area defined as one polygon. See Appendix 2: Data Structure. Attributes Tab.
SettlementNature	Category of settlement. For example: isolated farmstead, housing estate, market town. See Appendix 2: Data Structure. Attributes Tab. Rural and Urban Settlement.
PerimeterMorph	The shape of the perimeter of a unit of fields. For example: rectilinear or curvilinear. See Appendix 2: Data Structure. Attributes Tab. Enclosure.
DegreeOfSubdivision	Degree to which an area of land is enclosed, partially enclosed, or unenclosed. See Appendix 2: Data Structure. Attributes Tab. Enclosure and Unenclosed Land.
BoundaryLoss	An assessment of field boundary loss/gain since the 1 st edition OS. See Appendix 2: Data Structure. Attributes Tab. Enclosure.
RidgeAndFurrow	Evidence of ridge and furrow. See Appendix 2: Data Structure. Attributes Tab. Enclosure and Unenclosed Land.
InternalMorph	The shape of the boundaries of individual fields within a discrete unit of fields. For example: straight, sinuous, irregular. See Appendix 2: Data Structure. Attributes Tab. Enclosure.
WoodlandForm	An assessment of whether an area of woodland has been continuous since 1600AD or is replanted or semin-natural. See Appendix 2: Data Structure. Attributes Tab. Woodland.
WaterAndValleyForm	Water or valley floor features, including: lake, pond, watercourse. See Appendix 2: Data Structure. Attributes Tab. Water and Valley Floor.
WoodlandMakeUp	Tree types present in a woodland. For example: coniferous, broad leaf, mixed. See Appendix 2: Data Structure. Attributes Tab. Woodland.



SettlementForm	Character of settlement pattern. For example: cluster, row, terraced. See Appendix 2: Data Structure. Attributes Tab. Rural and Urban Settlement.
EnclosureType	Type of Enclosure. Can be used to give more detail about the origins of a particular field, beyond the general Enclosure HLC Type. Includes: enclosed strip and enclosure of parkland. See Appendix 2: Data Structure. Attributes Tab. Enclosure.
SettlementType	Assessment of whether a settlement is Urban or Rural
CivilAmenitiesType	Type of Civil Amenity. Can be used to give more detail about a particular site, beyond the general HLC type. See Appendix 2: Data Structure. Attributes Tab. Civic Amenities.
CommercialType	Type of Commercial site. Can be used to give more detail about a particular site, beyond the general HLC type. See Appendix 2: Data Structure. Attributes Tab. Commercial.
CivilProvisionType	Type of Civil Provision. Can be used to give more detail about a particular site, beyond the general HLC type. See Appendix 2: Data Structure. Attributes Tab. Civil Provision.
IndustrySubType	Type of Industrial site. Can be used to give more detail about a particular site, beyond the general HLC type. See Appendix 2: Data Structure. Attributes Tab. Industry.
OrnAndRecSubType	Type of Ornamental site. Can be used to give more detail about a particular site, beyond the general HLC type. See Appendix 2: Data Structure. Attributes Tab. Ornamental.
RecreationSubType	Type of Recreational site. Can be used to give more detail about a particular site, beyond the general HLC type. See Appendix 2: Data Structure. Attributes Tab. Recreation.
Confidence	<ul style="list-style-type: none"> • Certain • Probable • Possible <p>Used to indicate confidence in the assigned HLC Type. This typically relates to clarity of sources.</p>
PrevBroadType1	First previous Broad Type (most recent)
PrevHLCType1	First previous HLC Type (most recent)
PrevBroadType2	Second previous Broad Type
PrevHLCType2	Second previous HLC Type
PrevBroadType3	Third previous Broad Type
PrevHLCType3	Third previous HLC Type
PrevBroadType4	Fourth previous Broad Type
PrevHLCType4	Fourth previous HLC Type
PrevBroadType5	Fifth previous Broad Type (oldest)
PrevHLCType5	Fifth previous HLC Type (oldest)
xgCreated	(Field replaced by CreatedBy)
xgEdited	(Field replaced by AmendedBy)



Appendix 4: Summary Results of Pilot Phase

Charlotte Malone, 2014. Oxfordshire County council Historic and Natural Environment Team

Introduction

In 2012 Oxfordshire County Council secured English Heritage funding to begin a programme of Historic Landscape Characterisation (HLC) across the county of Oxfordshire. Oxfordshire is one of the last counties to carry out this work, and the end results will help complete a national HLC dataset. The Oxfordshire Historic Landscape Characterisation project began in October 2012, and will continue over the next 3 years ending in 2016. The aim of the project is to map traces of past landscapes still present within the Oxfordshire landscape today, whilst exploring the impact humanity has had on the formation of the current landscape. The results of this project will provide a holistic landscape perspective on the historic environment, complimenting more traditional sites and monuments-based archaeological planning work. It will cover the whole of Oxfordshire including urban and rural areas.

Preliminary Results

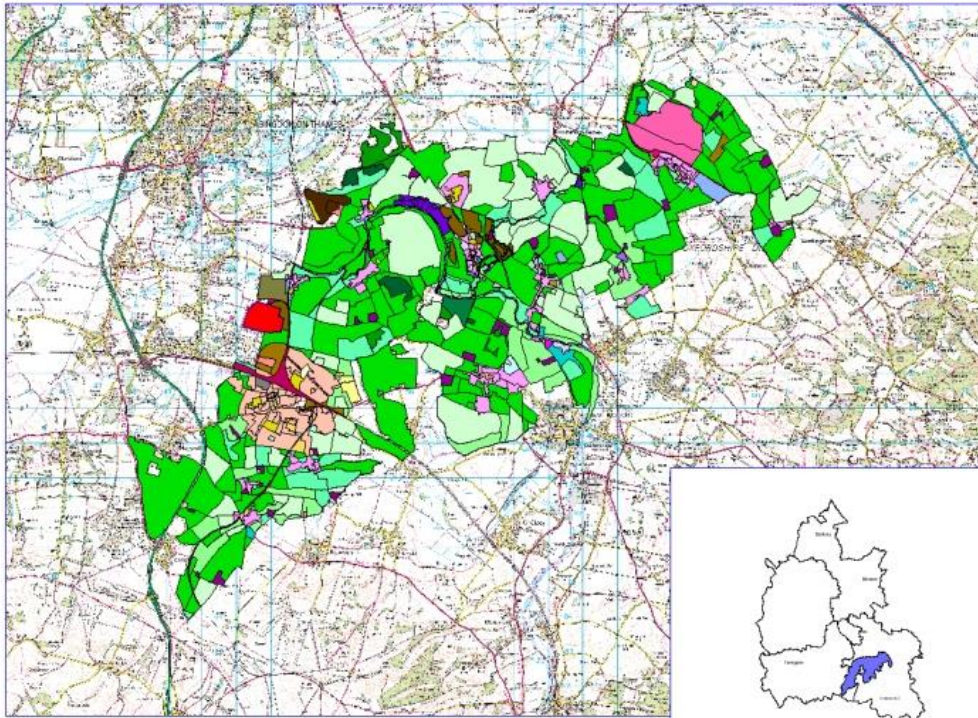
The pilot phase of the project aimed to test and finalise the methodology to be used for this project by collecting data for a small pilot area covering around 10, 000 ha in the south of Oxfordshire. This stage of the project has now been completed and a Consultation group has been formed to collect input and feedback on the projects progress. The Stage One completion report highlights changes to the methodology and provides an update on the progress of the project.

The pilot phase was predominantly a data collection phase of the project, and full interpretation of areas will not be carried out until stage three of the project - after the data for the whole county has been collected. The images shown below are an attempt to show the preliminary findings from the pilot area and provide an idea of how the data can be displayed to show not only the current landscape types but also to highlight how human impact has caused the landscape to change over time.

Figure 1 shows the current historic landscape types in pilot area with the greens representing different types of enclosure, and the pinks and purples representing areas of rural and urban settlement. Figures 2 and 3 show close ups of the current landscape types of Dorchester and Didcot. Figures 4, 5 and 6 show images of the same areas in 1750 AD. These images highlight the considerable change to the landscape that has occurred since the mid-18th century. The most predominant changes being the large scale enclosure of rough ground (shown in brown) and open field system (shown in hatched green) by planned enclosure in the post medieval period, and the massive growth of Didcot from a small village to a large town, with the addition of large numbers of housing estates throughout the modern time.



Oxfordshire HLC Pilot- Historic Landscape Types

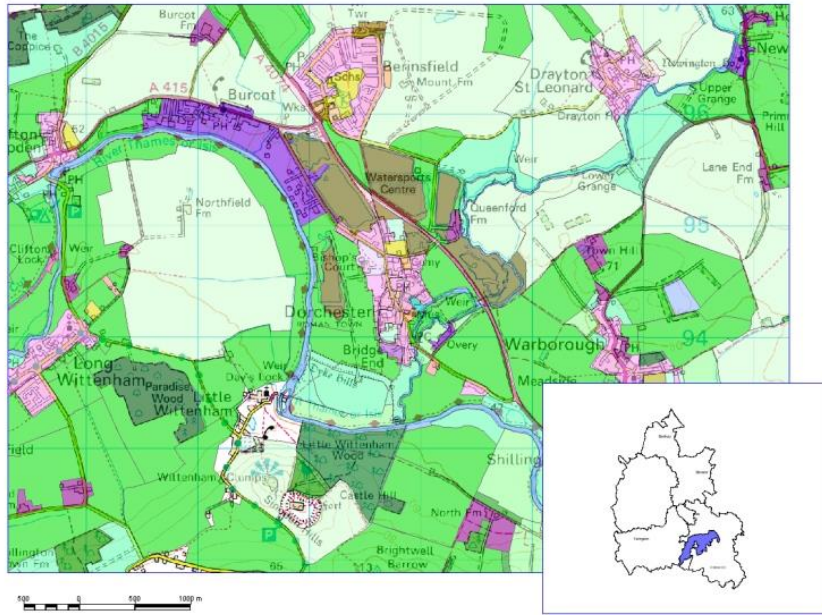


HLC by HLT

- | | |
|--------------------------------------|--------------------------------|
| Waste Disposal | Allotment |
| Reservoir | Nursery/garden centre |
| Sewerage Treatment Works | Orchard |
| COM- | Parkland/Designed landscape |
| Bike Path/Bridleway | Country Park |
| Airfield (Commercial) | Golf Course |
| Canals and Locks | Other Leisure Facilities |
| Major Road Junctions and Roundabouts | Sports Facility |
| Rail Transport Sites | R St- |
| CP- | Burghage Plots |
| Educational Facilities | Country House |
| Government Office and Civic Centre | Caravan, Campsite, Chalet site |
| Religious and Funerary | Hamlet |
| Business Park | Hotel |
| Shopping Centre | Farmstead |
| Prairie/Amalgamated Fields | Village |
| Planned Enclosure | Historic Urban Core |
| Piecemeal Enclosure | Town |
| Re-organised Fields | Caravan, Campsite, Chalet Site |
| Energy Industry | Green |
| Flooded extractive Pits | Rough Ground |
| Industrial Estate | Fresh Water Body |
| Extractive Works | |
| Mill/Mill Complex | |
| Ancient Woodland | |
| Secondary Woodland | |
| Plantation | |
| Military base | |



Oxfordshire HLC Current Landscape Type - Dorchester



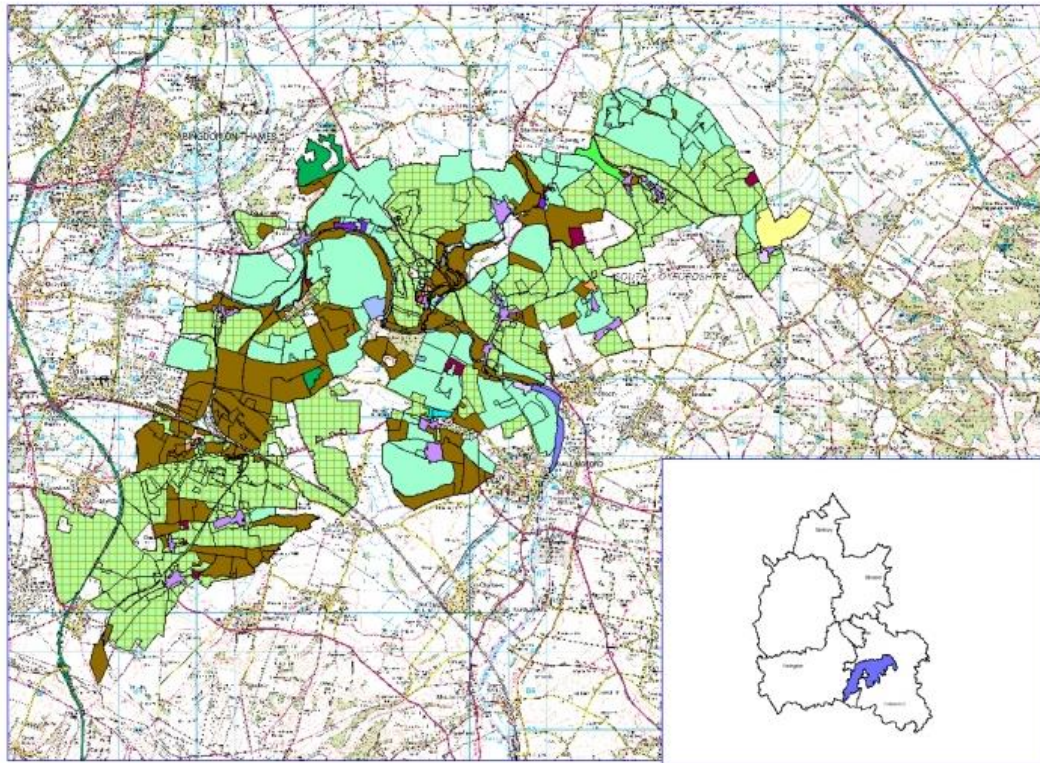
HLC by HLT

- Waste Disposal
- Reservoir
- Sewerage Treatment Works
- COM-
- Bike Path/Bridleway
- Airfield (Commercial)
- Canals and Locks
- Major Road Junctions and Roundabouts
- Rail Transport Sites
- CP-
- Educational Facilities
- Government Office and Civic Centre
- Religious and Funerary
- Business Park
- Shopping Centre
- Prairie/Amalgamated Fields
- Planned Enclosure
- Piecemeal Enclosure
- Re-organised Fields
- Energy Industry
- Flooded extractive Pits
- Industrial Estate
- Extractive Works
- Mill/Mill Complex
- Ancient Woodland
- Secondary Woodland
- Plantation
- Military base

- Allotment
- Nursery/garden centre
- Orchard
- Parkland/Designed landscape
- Country Park
- Golf Course
- Other Leisure Facilities
- Sports Facility
- RSt-
- Burial Plots
- Country House
- Caravan, Campsite, Chalet site
- Hamlet
- Hotel
- Farmstead
- Village
- Historic Urban Core
- Town
- Caravan, Campsite, Chalet Site
- Green
- Rough Ground
- Fresh Water Body



Oxfordshire HLC Pilot 1750



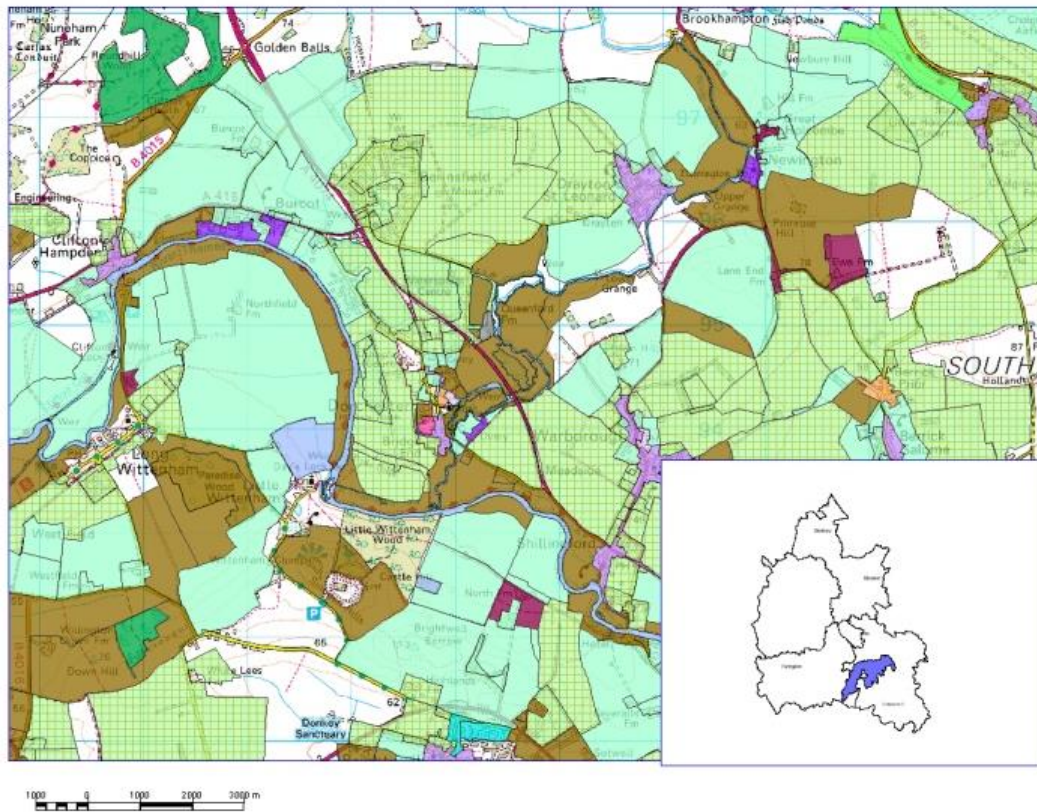
1000 0 1000 2000 3000 m

HLT 1750

- Religious and Funerary
- Allotment
- Ancient Woodland
- Assarted Enclosure
- Burgage Plots
- Country House
- Deer Park
- Farmstead
- Fresh Water Body
- Green
- Hamlet
- Historic Urban Core
- Mill / Mill Complex
- Open Field System
- Orchard
- Ornamental water body
- Parkland / Designed Landscape
- Peicemeal Enclosure
- Planned Enclosure
- Reorganised Fields
- Rough Ground
- Secondary Woodland



Oxfordshire HLC Pilot - Dorchester 1750



HLT 1750

- Religious and Funerary
- Allotment
- Ancient Woodland
- Assarted Enclosure
- Burgage Plots
- Country House
- Deer Park
- Farmstead
- Fresh Water Body
- Green
- Hamlet
- Historic Urban Core
- Mill / Mill Complex
- Open Field System
- Orchard
- Ornamental water body
- Parkland / Designed Landscape
- Piecemeal Enclosure
- Planned Enclosure
- Reorganised Fields
- Rough Ground
- Secondary Woodland



Appendix 5: Capacity for Change case study data

Data used to create the capacity for change case study presented in Chapter 5.

**HLC Types in the five case study areas**

Civic Amenities - Reservoir	Orchard and Hort - Allotment
Civic Amenities - Sewerage Treatment Works	Orchard and Hort - Nursery/ Garden Centre
Civic Amenities - Utilities	Orn -Domestic Garden
Civic Amenities - Waste Disposal	Orn-Parkland / Designed Landscape
Civil Provision - Educational Facility	Managed Archaeological Site
Civil Provision - Gov Office and Civic Centre	Recreation - Country Park
Civil Provision - Health Care Facility	Recreation - Golf Course
Civil Provision - Park and Ride	Recreation - Hunting Site
Civil Provision - Religious and Funerary	Recreation - Nature Reserve
Commercial - Business Park	Recreation - Other Leisure facilities
Commercial -Shopping Centre	Recreation - Racing Sports Sites
Communication - Main Road	Recreation -Sports Facilities
Communication -Bike Path/ bridleway	Rural - Caravan/Chalet/ Camping site
Communication -Canals and Locks	Rural - Country House
Communication -Major Road Junction	Rural - Dwelling
Communication -Motorways	Rural - Hamlet
Communication -Rail transport sites	Rural - Hotel
Ancient Enclosure	Rural - Village
Crofts (medieval & Post Medieval)	Rural -Farmstead
Enclosure - Reclaimed land	Unenclosed -Green
Enclosure - Paddocks and Stables	Unenclosed -Rough Ground
Piecemeal Enclosure	Urban - City
Planned Enclosure	Urban - Dwelling
Prairie / Amalgamated Enclosure	Urban - Town
Reorganised Enclosures	Water - Fresh Water Body
Industry -Extractive Works	Water - River
Industry -Flooded Extractive pits	Water - Water Meadow
Industry -Industrial Estate	Woodland - Ancient Woodland
Industry -Mill / Mill Complex	Woodland -Plantation
Military - Military Airfield	Woodland -Secondary Woodland
Military - Shooting Range	Woodland -Woodland Pasture



Capacity Weighted Scores

Effect on Legibility and Readability of Time Depth	Score	Impact on Archaeological Remains	Score	Impact on Historic Built Structures	Score	Change in Landscape Character	Score	Effect on Semi-Natural Components	Score	Effect on Amenity	Score
Development is unlikely to impact on the legibility of earlier landscapes	-1	Development is unlikely to impact archaeological potential	-1	Development is unlikely to impact historic built structures	-1	Development is unlikely to impact landscape character	-1	Development is unlikely to impact semi-natural components	-1	Development is unlikely to impact amenity	-1
Development has the potential to have a slight impact on the legibility of earlier landscapes	-2	Development has the potential to have a slight impact on archaeological potential	-2	Development has the potential to have a slight impact on historic built structures	-2	Development has the potential to have a slight impact on landscape character	-2	Development has the potential to have a slight impact on semi-natural components	-1	Development has the potential to have a slight impact on amenity	-1
Development is likely to have a moderate impact on the legibility of earlier landscapes	-3	Development is likely to have a moderate impact on archaeological potential	-3	Development is likely to have a moderate impact on historic built structures	-3	Development is likely to have a moderate impact on landscape character	-3	Development is likely to have a moderate impact on semi-natural components	-2	Development is likely to have a moderate impact on amenity	-2
Development is highly likely to have a significant impact on the legibility of earlier landscapes	-4	Development is highly likely to have a significant impact on archaeological potential	-4	Development is highly likely to have a significant impact on historic built structures	-4	Development is highly likely to have a significant impact on landscape character	-4	Development is highly likely to have a significant impact on semi-natural components	-2	Development is highly likely to have a significant impact on amenity	-2



The capacity of each HLC Type to absorb the modelled change scenario

HLC Type	Effect on Legibility and Readability of Time Depth	Score	Impact on Archaeological Remains	Score	Impact on Historic Built Structures	Score	Change in Landscape Character	Score	Effect on Semi-Natural Components	Score	Effect on Amenity	Score	Total
Civic Amenities - Reservoir	A predominantly modern and intrusive type where little historic legibility is likely to remain. Development is unlikely to impact on the legibility of earlier landscapes.	-1	Groundworks involved in the creation of this type are likely to have removed most archaeological material. Development is unlikely to impact archaeological potential	-1	Few historic buildings are likely to exist at this type. Development is unlikely to impact historic built structures	-1	A rare type in Oxfordshire which does not generally impact on landscape character. However, the large sites of this type do influence character locally. Development has the potential to have a slight impact on landscape character	-2	This type is likely to have removed much of any existing ecosystems when constructed; however, it does encourage water-based and associated biodiversity. Development has the potential to have a slight impact on semi-natural components	-1	Sites of this type tend to be of low aesthetic value, but may contribute to communal or environmental character. Pollution would negatively effect this type. Development has the potential to have a slight effect on amenity	-1	-7
Civic Amenities - Sewerage Treatment Works	A modern type where little historic legibility is likely to remain. Small installations may preserve older field boundaries which do encourage legibility. Development has the potential to have a slight impact on the legibility of earlier landscapes	-2	Groundworks involved in the creation of this type are likely to have removed most archaeological material. Undeveloped land surrounding installations may, however, preserve remains. Development has the potential to have a slight impact on archaeological potential	-2	Few historic buildings are likely to exist at this type. Development is unlikely to impact historic built structures	-1	These are a rare and modern type in Oxfordshire and do not generally impact greatly on character. Development is unlikely to impact landscape character	-1	This type is likely to have removed much of any existing ecosystems when constructed; however, surrounding land may be left rough and support a variety of biodiversity. Development has the potential to have a slight impact on semi-natural components	-1	This type is of low aesthetic and communal value and is unlikely to be affected by pollution. Development is unlikely to impact amenity	-0.5	-8



Civic Amenities - Utilities	A predominantly modern and intrusive type where little historic legibility is likely to remain. Development is unlikely to impact on the legibility of earlier landscapes.	-1	Groundworks involved in the creation of this type are likely to have removed most archaeological material. Development is unlikely to impact archaeological potential	-1	Few historic buildings are likely to exist at this type. Development is unlikely to impact historic built structures	-1	Whilst a rare and modern type in Oxfordshire, the visual dominance of some of these sites does contribute to the character of the county. Development is likely to have a moderate impact on landscape character	-3	This type is likely to have removed much of any existing ecosystems when constructed; however, surrounding land may be left rough and support a variety of biodiversity. Development has the potential to have a slight impact on semi-natural components	-1	Some sites of this type will contribute little to amenity, others will be of some communal significance and relate to the history of the area. Development is likely to have a moderate impact on amenity	-1	-8
Civic Amenities - Waste Disposal	Large-scale landfill and recycling sites frequently remove all features of the historic landscape. Development is unlikely to impact on the legibility of earlier landscapes	-1	Groundworks involved in the creation of this type are likely to have removed most archaeological material. Development is unlikely to impact archaeological potential	-1	Few historic buildings are likely to exist at this type. Development is unlikely to impact historic built structures	-1	These are a rare and modern type in Oxfordshire and do not generally impact greatly on character. Development is unlikely to impact landscape character	-1	This type is likely to have removed any historic ecosystems when constructed. Development is unlikely to impact semi-natural components	-0.5	This type is of low aesthetic and communal value and is unlikely to be affected by pollution. Development is unlikely to impact amenity	-0.5	-5



<p>Civil Provision - Educational Facility</p>	<p>New sites of this type tend to remove earlier features of the landscape; however, older sites may be of historic importance themselves. Development is likely to have a moderate impact on the legibility of earlier landscapes</p>	<p>-3</p>	<p>The age of some of these sites may mean that archaeological remains are preserved. More modern sites may have removed remains. Large open spaces may also preserve remains. Development is likely to have a moderate impact on archaeological potential</p>	<p>-3</p>	<p>Some buildings associated with this type may be historic structures. Development is likely to have a moderate impact on historic built structures</p>	<p>-3</p>	<p>The rarity of this type reduces their impact on landscape character; however, their importance to local communities and, in some cases, their age does increase their impact. Development has the potential to have a slight impact on landscape character</p>	<p>-2</p>	<p>Some historic biodiversity may exist at these sites which may be affected by development. Playing fields, in particular, may make a contribution. Development has the potential to have a slight impact on semi-natural components</p>	<p>-1</p>	<p>This type is important both in the past and today for local communities. Some historic buildings may be vulnerable to pollution. Development is highly likely to have a significant impact on amenity</p>	<p>-2</p>	<p>-14</p>
<p>Civil Provision - Gov Office and Civic Centre</p>	<p>Frequently modern buildings which mask the legibility of the historic landscape. Some older buildings which may be of historic importance. Development has the potential to have a slight impact on the legibility of earlier landscapes</p>	<p>-2</p>	<p>Groundworks involved in the creation of this type are likely to have removed most archaeological material. Some older sites may preserve remains. Development has the potential to have a slight impact on archaeological potential</p>	<p>-2</p>	<p>Some historic buildings may exist at these sites which may be vulnerable to development. Development is likely to have a moderate impact on historic built structures</p>	<p>-3</p>	<p>The rarity of this type reduces their impact on landscape character; however, older sites will increase their impact. Development has the potential to have a slight impact on landscape character</p>	<p>-2</p>	<p>This type is likely to have removed any historic ecosystems when constructed. Development is unlikely to impact semi-natural components</p>	<p>-0.5</p>	<p>This type will likely have some communal significance and some historic buildings may be affected by pollution. Development has the potential to have a slight impact on amenity</p>	<p>-1</p>	<p>-11</p>



Civil Provision - Health Care Facility	New sites of this type tend to remove earlier features of the landscape; however, older sites may be of historic importance themselves. Development is likely to have a moderate impact on the legibility of earlier landscapes	-3	Groundworks involved in the creation of this type are likely to have removed most archaeological material. Some older sites may preserve remains. Development has the potential to have a slight impact on archaeological potential	-2	Some historic buildings may exist at these sites which may be vulnerable to development. Development is likely to have a moderate impact on historic built structures	-3	The rarity of this type reduces their impact on landscape character; however, their importance to local communities and, in some cases, their age does increase their impact. Development has the potential to have a slight impact on landscape character	-2	This type is likely to have removed any historic ecosystems when constructed. Development is unlikely to impact semi-natural components	-0.5	This type is important both in the past and today for local communities. Some historic buildings may be vulnerable to pollution. Development is highly likely to have a significant impact on amenity	-2	-13
Civil Provision - Park and Ride	This type tends to remove earlier landscape features to make way for paving and road surfaces. Development is unlikely to impact on the legibility of earlier landscapes	-1	Groundworks involved in the creation of this type are likely to have removed most archaeological material. Development is unlikely to impact archaeological potential	-1	Few historic buildings are likely to exist at this type. Development is unlikely to impact historic built structures	-1	These are a rare and modern type in Oxfordshire and do not generally impact greatly on character. Development is unlikely to impact landscape character	-1	This type is likely to have removed any historic ecosystems when constructed. Development is unlikely to impact semi-natural components	-0.5	This type is of low aesthetic and communal value and is unlikely to be affected by pollution. Development is unlikely to impact amenity	-0.5	-5



Civil Provision - Religious and Funerary	Frequently an important feature in the historic landscape and affecting the organisation of medieval, post-medieval, and modern settlement patterns. Development is highly likely to have a significant impact on the legibility of earlier landscapes	-4	High chance of preserved archaeological remains. Development is highly likely to have a significant impact on archaeological potential	-4	Probable historic structures associated with this type. Development is highly likely to have a significant impact on historic built structures	-4	Important features within historic settlement cores which influence character across the county. Development is highly likely to have a significant impact on landscape character	-4	Likely preservation of historic ecosystems around these sites which encourages a range of biodiversity. Ancient hedges and trees may also be present. Development is highly likely to have a significant impact on semi-natural components	-2	Significant historic and communal parts of the landscape. Vulnerable to pollution. Development is highly likely to have a significant impact on amenity	-2	-20
Commercial - Business Park	A modern type where little historic legibility is likely to remain. Development has the potential to have a slight impact on the legibility of earlier landscapes	-1	Groundworks involved in the creation of this type are likely to have removed most archaeological material. Development is unlikely to impact archaeological potential	-1	Few historic buildings are likely to exist at this type. Development is unlikely to impact historic built structures	-1	These are a rare and modern type in Oxfordshire and do not generally impact greatly on character. Development is unlikely to impact landscape character	-1	This type is likely to have removed any historic ecosystems when constructed. Development is unlikely to impact semi-natural components	-0.5	This type is of low aesthetic and communal value and is unlikely to be affected by pollution. Development is unlikely to impact amenity	-0.5	-5
Commercial - Shopping Centre	Large modern buildings where little historic legibility is likely to remain. Development is unlikely to impact on the legibility of earlier landscapes	-1	Groundworks involved in the creation of this type are likely to have removed most archaeological material. Development is unlikely to impact archaeological potential	-1	Few historic buildings are likely to exist at this type. Development is unlikely to impact historic built structures	-1	These are a rare and modern type in Oxfordshire and do not generally impact greatly on character. Development is unlikely to impact landscape character	-1	This type is likely to have removed any historic ecosystems when constructed. Development is unlikely to impact semi-natural components	-0.5	This type is of low aesthetic and communal value and is unlikely to be affected by pollution. Development is unlikely to impact amenity	-0.5	-5



Communication - Main Road	Frequently modern features or with extensive modern alterations which affect legibility of historic landscape. Some roads may follow the course of long-distance historic routeways and may preserve some element of these. Development has the potential to have a slight impact on the legibility of earlier landscapes	-2	Groundworks involved in the creation of this type are likely to have removed most archaeological material. Development is unlikely to impact archaeological potential	-1	Few historic buildings are likely to exist at this type. Development is unlikely to impact historic built structures	-1	These are a rare and modern type in Oxfordshire and do not generally impact greatly on character. Development is unlikely to impact landscape character	-1	This type is likely to have removed any historic ecosystems when constructed. Development is unlikely to impact semi-natural components	-0.5	This type is of low aesthetic and communal value and is unlikely to be affected by pollution. Development is unlikely to impact amenity	-0.5	-6
Communication -Bike Path/ bridleway	A mixture of modern and historic features. Bridleways often follow the course of old lanes or boundaries. Removal of these may reduce the legibility of the historic landscape. Development is likely to have a moderate impact on the legibility of earlier landscapes	-3	The creation of this type is unlikely to have removed all archaeological remains. Development is likely to have a moderate impact on archaeological potential	-3	Few historic buildings are likely to exist at this type. Development is unlikely to impact historic built structures	-1	A rare type recorded in Oxfordshire, but possibly preserving older features which contribute to the character of the area. Development has the potential to have a slight impact on landscape character	-2	This type may have associated historic hedgerows and some rough ground which promotes biodiversity. Development is likely to have a moderate impact on semi-natural components	-1.5	This type is vulnerable to pollution, has aesthetic and communal value, and may relate to public rights of access. Development is highly likely to have a significant impact on amenity	-2	-13



Communication -Canals and Locks	Historic parts of Oxfordshire's landscape. Development is highly likely to have a significant impact on the legibility of earlier landscapes	-4	Archaeological remains are unlikely to survive at these types. Development is unlikely to impact archaeological potential	-1	Associated infrastructure and buildings may have historic significance. Development is likely to have a moderate impact on historic built structures	-3	A significant part of Oxfordshire's history and influential in the development of the landscape. Development is highly likely to have a significant impact on landscape character	-4	Rough ground and hedgerows either side of this type may be of some age and, therefore, vulnerable to development. There is also high potential for biodiversity at this type. Development is likely to have a moderate impact on semi-natural components	-1.5	This type is vulnerable to pollution and has aesthetic and communal value. Development is highly likely to have a significant impact on amenity	-2	-16
Communication -Major Road Junction	Frequently modern features which affect legibility of historic landscape. Development is unlikely to impact on the legibility of earlier landscapes	-1	Groundworks involved in the creation of this type are likely to have removed most archaeological material. Development is unlikely to impact archaeological potential	-1	Few historic buildings are likely to exist at this type. Development is unlikely to impact historic built structures	-1	These are a rare and modern type in Oxfordshire and do not generally impact greatly on character. Development is unlikely to impact landscape character	-1	This type is likely to have removed any historic ecosystems when constructed. Development is unlikely to impact semi-natural components	-0.5	This type is of low aesthetic and communal value and is unlikely to be affected by pollution. Development is unlikely to impact amenity	-0.5	-5
Communication -Motorways	Frequently modern features which affect legibility of historic landscape. Development is unlikely to impact on the legibility of earlier landscapes	-1	Groundworks involved in the creation of this type are likely to have removed most archaeological material. Development is unlikely to impact archaeological potential	-1	Few historic buildings are likely to exist at this type. Development is unlikely to impact historic built structures	-1	These are a rare and modern type in Oxfordshire and do not generally impact greatly on character. Development is unlikely to impact landscape character	-1	This type is likely to have removed any historic ecosystems when constructed. Development is unlikely to impact semi-natural components	-0.5	This type is of low aesthetic and communal value and is unlikely to be affected by pollution. Development is unlikely to impact amenity	-0.5	-5



Communication -Rail transport sites	Predominantly historic parts of Oxfordshire's landscape. Development is highly likely to have a significant impact on the legibility of earlier landscapes	-4	Groundworks involved in the creation of this type are likely to have removed most archaeological material. Development is unlikely to impact archaeological potential	-1	Some historic buildings and associated infrastructure may exist at sites of this type. Development is likely to have a moderate impact on historic built structures	-3	A significant part of Oxfordshire's history and influential in the development of the landscape. Development is highly likely to have a significant impact on landscape character	-4	Rough ground and hedgerows either side of this type may be of some age and, therefore, vulnerable to development. Development has the potential to have a slight impact on semi-natural components	-1	This type has communal value, but development would have less of an impact aesthetically or environmentally. Development has the potential to have a slight impact on amenity	-1	-14
Ancient Enclosure	Historic parts of the county which preserve legibility of the medieval and post-medieval landscape. Development is highly likely to have a significant impact on the legibility of earlier landscapes	-4	Archaeological remains are unlikely to be disturbed. Development is highly likely to have a significant impact on archaeological potential	-4	Few historic buildings are likely to exist at this type. Development is unlikely to impact historic built structures	-1	A previously significant part of the landscape, which rarely survives and which is, therefore, important for the historic character of the county. Development is highly likely to have a significant impact on landscape character	-4	Old hedgerows and isolated stands of trees may preserve historically significant ecosystems. Development is highly likely to have a significant impact on semi-natural components	-2	As a rare enclosure type, this type promotes landscape diversity. Ancient hedgerows are also particularly vulnerable to pollution. This type also has some aesthetic and environmental importance. Development is highly likely to have a significant impact on amenity	-2	-17



Crofts (medieval & Post Medieval)	Historic parts of the county which preserve legibility of the medieval and post-medieval landscape. Development is highly likely to have a significant impact on the legibility of earlier landscapes	-4	Archaeological remains are unlikely to be disturbed. Development is highly likely to have a significant impact on archaeological potential	-4	Some historic buildings may be associated with this type. Development has the potential to have a slight impact on historic built structures	-2	A rare survival of an historic landscape and one which influenced patterns of settlement. Development is highly likely to have a significant impact on landscape character	-4	Old hedgerows and isolated stands of trees may preserve historically significant ecosystems. Development is highly likely to have a significant impact on semi-natural components	-2	As a rare enclosure type, this type promotes landscape diversity. Ancient hedgerows are also particularly vulnerable to pollution. This type also has some aesthetic and environmental importance. Development is highly likely to have a significant impact on amenity	-2	-18
Enclosure - Reclaimed land	Frequently a modern type which replaces earlier landscape types. This type can often override earlier landscapes. Development is unlikely to impact on the legibility of earlier landscapes	-1	Groundworks associated with earlier types are likely to have removed most archaeological material. Development is unlikely to impact archaeological potential	-1	Few historic buildings are likely to exist at this type. Development is unlikely to impact historic built structures	-1	These are a rare and modern type in Oxfordshire and do not generally impact greatly on character. Development is unlikely to impact landscape character	-1	Natural environment likely to be predominantly modern and of limited biodiversity. Development is unlikely to impact semi-natural components	-0.5	As a rare enclosure type, this type does promote landscape diversity. It will also have some aesthetic and environmental value. Development has the potential to have a slight impact on amenity	-1	-6



Enclosure - Paddocks and Stables	Predominantly modern type which has rearranged earlier landscapes and where the legibility of the historic landscape is already reduced. Occasionally older field boundaries survive, with smaller fields created internally. Development has the potential to have a slight impact on the legibility of earlier landscapes	-2	Archaeological remains are unlikely to be disturbed. Development is highly likely to have a significant impact on archaeological potential	-4	Few historic buildings are likely to exist at this type. Development is unlikely to impact historic built structures	-1	Whilst a rare and modern type in Oxfordshire, this type contributes to recreational use of the landscape and has some significance for the character of an area. Development is likely to have a moderate impact on landscape character	-3	Natural environment is likely to be predominantly modern, but older hedgerows may exist on the perimeter. Development has the potential to have a slight impact on semi-natural components	-1	As a rare enclosure type, this type promotes landscape diversity. Any surviving ancient hedgerows are also particularly vulnerable to pollution. This type has some aesthetic, communal and environmental importance. Development is likely to have a moderate impact on amenity	-1.5	-13
Piecemeal Enclosure	Frequently historic parts of the landscape which preserve legibility of the post-medieval landscape. Development is highly likely to have a significant impact on the legibility of earlier landscapes	-4	Archaeological remains are unlikely to be disturbed. Development is highly likely to have a significant impact on archaeological potential	-4	Few historic buildings are likely to exist at this type. Development is unlikely to impact historic built structures	-1	A frequent and often historic part of the landscape which contributes to the character of an area by shaping patterns of landscape use. Development is highly likely to have a significant impact on landscape character	-4	Old hedgerows and isolated stands of trees may preserve historically significant ecosystems. Development is highly likely to have a significant impact on semi-natural components	-2	The irregularity of these enclosures encourages landscape diversity and any surviving ancient hedgerows are likely to be vulnerable to pollution. This type also has some aesthetic and environmental importance. Development has the potential to have a slight impact on amenity	-1	-16



Planned Enclosure	Frequently historic parts of the landscape which preserve legibility of the later post-medieval landscape. However, this type has often removed traces of earlier landscapes. Development is likely to have a moderate impact on the legibility of earlier landscapes	-3	Archaeological remains are unlikely to be disturbed. Development is highly likely to have a significant impact on archaeological potential	-4	Few historic buildings are likely to exist at this type. Development is unlikely to impact historic built structures	-1	A frequent and often historic part of the landscape which contributes to the character of an area by shaping patterns of landscape use. Development is highly likely to have a significant impact on landscape character	-4	Some 18th and 19th century hedgerows may preserve historic ecosystems. Development is likely to have a moderate impact on semi-natural components	-1.5	Surviving old hedgerows are likely to be vulnerable to pollution. This type also has some aesthetic and environmental importance. Development has the potential to have a slight impact on amenity	-1	-15
Prairie / Amalgamated Enclosure	Predominantly modern enclosures which have often removed traces of earlier landscapes. Development is unlikely to impact on the legibility of earlier landscapes	-1	Archaeological remains are unlikely to be disturbed. Development is highly likely to have a significant impact on archaeological potential	-4	Few historic buildings are likely to exist at this type. Development is unlikely to impact historic built structures	-1	Large and dominant types in the landscape found across the county and which influence the modern character of an area. Modern date means this type has had little affect on the evolution of the landscape. Development is likely to have a moderate impact on landscape character	-3	Predominantly modern landscapes, often created by the removal of old hedgerows and trees. Intensively farmed and with little remaining historic natural environment. Development has the potential to have a slight impact on semi-natural components	-1	Some aesthetic value, but commonplace and of reduced environmental importance. Development has the potential to have a slight impact on amenity	-1	-11



Reorganised Enclosures	Predominantly modern enclosures which have often removed traces of earlier landscapes. Development is unlikely to impact on the legibility of earlier landscapes	-1	Archaeological remains are unlikely to be disturbed. Development is highly likely to have a significant impact on archaeological potential	-4	Few historic buildings are likely to exist at this type. Development is unlikely to impact historic built structures	-1	The most common type in the county, but varying significantly in form and contributing little to an area's character. Typically modern. Development has the potential to have a slight impact on landscape character	-2	Predominantly modern landscapes, often created by the removal of old hedgerows and trees. Intensively farmed and with little remaining historic natural environment. Development has the potential to have a slight impact on semi-natural components	-1	Some aesthetic value, but commonplace and of reduced environmental importance. Development has the potential to have a slight impact on amenity	-1	-10
Industry - Extractive Works	Intrusive type which often removes all traces of earlier landscapes. Development is unlikely to impact on the legibility of earlier landscapes	-1	Groundworks involved in the creation of this type are likely to have removed most archaeological material. Development is unlikely to impact archaeological potential	-1	Few historic buildings are likely to exist at this type. Development is unlikely to impact historic built structures	-1	Rare across the county as a whole but significant in localised areas and contributing to the character of the modern landscape. Development has the potential to have a slight impact on landscape character	-2	Wholesale removal of historic ecosystems during the creation of this type and the disruption of surrounding historic landscapes. Development is unlikely to impact semi-natural components	-0.5	This type is of low aesthetic and communal value and is unlikely to be affected by pollution. Development is unlikely to impact amenity	-0.5	-6



Industry - Flooded Extractive pits	Created by the flooding of an intrusive type, which will often have removed all traces of earlier landscape. Development is unlikely to impact on the legibility of earlier landscapes	-1	Groundworks involved in the creation of this type are likely to have removed most archaeological material. Development is unlikely to impact archaeological potential	-1	Few historic buildings are likely to exist at this type. Development is unlikely to impact historic built structures	-1	Rare across the county as a whole but significant in localised areas and contributing to the character of the modern landscape. Development has the potential to have a slight impact on landscape character	-2	Whilst historic ecosystems are likely to have been removed, this type contributes to current biodiversity. Development is likely to have a moderate impact on semi-natural components	-1.5	This type is frequently used for recreation and has some communal value. They can also be aesthetically and environmentally of importance. Development is likely to have a moderate impact on amenity	-1.5	-8
Industry - Industrial Estate	A modern type where little historic legibility is likely to remain. Development is unlikely to impact on the legibility of earlier landscapes	-1	Groundworks involved in the creation of this type are likely to have removed most archaeological material. Development is unlikely to impact archaeological potential	-1	Few historic buildings are likely to exist at this type. Development is unlikely to impact historic built structures	-1	These are a rare and modern type in Oxfordshire and do not generally impact greatly on character. Development is unlikely to impact landscape character	-1	This type is likely to have removed any historic ecosystems when constructed. Development is unlikely to impact semi-natural components	-0.5	This type is of low aesthetic and communal value and is unlikely to be affected by pollution. Development is unlikely to impact amenity	-0.5	-5
Industry -Mill / Mill Complex	Typically modern or post-medieval features which may preserve some legibility of the historic landscape. Development is likely to have a moderate impact on the legibility of earlier landscapes	-3	Groundworks involved in the creation of this type are likely to have removed most archaeological material. Some older sites may preserve remains. Development has the potential to have a slight impact on archaeological potential	-2	Some historic buildings may exist at these sites which may be vulnerable to development. Development is likely to have a moderate impact on historic built structures	-3	A rare and sometimes modern type, their impact on character is limited. Older sites do reflect historic landscape patterns. Development has the potential to have a slight impact on landscape character	-2	Associated mill streams and rough ground may preserve elements of historic ecosystems. Modern development may have impacted upon this but there may remain some vulnerability to further development. Development is likely to have a moderate impact on semi-natural components	-1.5	Older sites of this type may have some historic and environmental value. Development has the potential to have a slight impact on amenity	-1	-13



Military - Military Airfield	Modern features which remove earlier traces of the landscape. Development is unlikely to impact on the legibility of earlier landscapes	-1	Groundworks involved in the creation of this type are likely to have removed some archaeological material, but remains may still exist where there are open areas or beneath runways. Development is likely to have a moderate impact on archaeological potential	-3	Some of the airfields and their associated buildings in Oxfordshire are of historic importance. Development is likely to have a moderate impact on historic built structures	-3	Whilst rare, this type is particularly large and dominates local areas. Development is likely to have a moderate impact on landscape character	-3	Historic ecosystems will have been affected by the creation of this type, but some areas may have been preserved on the rough ground between and beside runways and structures. Old hedgerows and trees are likely to have been removed. Development has the potential to have a slight impact on semi-natural components	-1	This type can have significant communal and environmental value; however, pollution, traffic and noise can detract from this. Development has the potential to have a slight impact on amenity	-1	-12
Military - Shooting Range	Modern types which can have altered the landscape, but which often utilise the existing surrounds. Some legibility of earlier landscapes may, therefore, be preserved. Development has the potential to have a slight impact on the legibility of earlier landscapes	-2	There is some possibility that archaeological remains are undisturbed. Development is likely to have a moderate impact on archaeological potential	-3	Few historic buildings are likely to exist at this type. Development is unlikely to impact historic built structures	-1	These are a rare and modern type in Oxfordshire and do not generally impact greatly on character. Development is unlikely to impact landscape character	-1	Generally low impact on natural environment, with some areas of rough ground. Older hedgerows and trees may survive on the perimeter. Development has the potential to have a slight impact on semi-natural components	-1	This type is likely to have some environmental value and be vulnerable to pollution. It is unlikely to have communal or aesthetic value. Development has the potential to have a slight impact on amenity	-1	-9



Orchard and Hort - Allotment	A post-medieval and modern type which can contribute to the history of the landscape. Typically developed within older enclosures and often preserving the earlier perimeter boundaries. Development is likely to have a moderate impact on the legibility of earlier landscapes	-3	Archaeological remains are unlikely to be disturbed. Development is highly likely to have a significant impact on archaeological potential	-4	Few historic buildings are likely to exist at this type. Development is unlikely to impact historic built structures	-1	A rare and often post-medieval type which holds some local significance for the character of the historic landscape. Development is likely to have a moderate impact on landscape character	-3	Intensively cultivated land which is likely to have removed much of the historic ecosystems formerly present. Hedgerows and trees, however, may have been maintained. Important landscapes for modern biodiversity. Development is likely to have a moderate impact on semi-natural components	-1.5	Significant communal and environmental places vulnerable to pollution. Development is highly likely to have a significant impact on amenity	-2	-15
Orchard and Hort - Nursery/ Garden Centre	A typically modern type where little historic legibility is likely to remain. Development is unlikely to impact on the legibility of earlier landscapes	-1	The creation of this type is unlikely to have removed all archaeological remains and any development, therefore, has the potential to disturb remains. Development is likely to have a moderate impact on archaeological potential	-3	Some historic buildings may exist at these sites which may be vulnerable to development. Development has the potential to have a slight impact on historic built structures	-2	These are a rare and modern type in Oxfordshire and do not generally impact greatly on character. Development is unlikely to impact landscape character	-1	Intensively cultivated and managed land which is likely to have removed much of the historic ecosystems formerly present. Important landscapes for modern biodiversity. Development has the potential to have a slight impact on semi-natural components	-1	This type has some environmental value and is likely to be vulnerable to pollution. Development has the potential to have a slight impact on amenity	-1	-9



Orn -Domestic Garden	Post-medieval and modern features sometimes relating to historic houses and preserving some legibility of earlier landscapes. Development is likely to have a moderate impact on the legibility of earlier landscapes	-3	The creation of this type is unlikely to have removed all archaeological remains and any development, therefore, has the potential to disturb remains. Development is likely to have a moderate impact on archaeological potential	-3	Some historic buildings may exist at these sites which may be vulnerable to development. Development has the potential to have a slight impact on historic built structures	-2	A rare type historically and in the current landscape, which contributes to the character of the county only through association with important country houses. Development has the potential to have a slight impact on landscape character	-2	Some of these may preserve historic gardens, but these are likely to be highly managed, with few areas of natural landscape. Development has the potential to have a slight impact on semi-natural components	-1	This type has some environmental and aesthetic value which is vulnerable to pollution. These gardens are often open to the public at certain times and, therefore, have some communal value. Development is likely to have a moderate impact on amenity	-1.5	-13
Orn-Parkland / Designed Landscape	Frequently the oldest part of the current landscape, preserving medieval and post-medieval landscapes. Development is highly likely to have a significant impact on the legibility of earlier landscapes	-4	Archaeological remains are unlikely to be disturbed. Development is highly likely to have a significant impact on archaeological potential	-4	Predominantly a non-built environment but any associated structures are likely to be of historic value. Development is likely to have a moderate impact on historic built structures	-3	A rare but large and important part of the landscape, which has affected the organisation of the land. Development is highly likely to have a significant impact on landscape character	-4	Likely preservation of historic ecosystems at these sites along with some ancient trees and hedges. Development is highly likely to have a significant impact on semi-natural components	-2	This type has some environmental and aesthetic value which is vulnerable to pollution. Often open to the public and important communally. Also significant for landscape diversity. Development is highly likely to have a significant impact on amenity	-2	-19



Managed Archaeological Site	Post-medieval and medieval landscape features are often removed to present and manage prehistoric and Roman landscapes. Some historic legibility is, therefore, likely to have been lost. Development is likely to have a moderate impact on the legibility of earlier landscapes	-3	Archaeological remains are likely to be undisturbed. This type frequently includes Scheduled Ancient Monuments. Development is highly likely to have a significant impact on archaeological potential	-4	Few historic buildings are likely to exist at this type. Development is unlikely to impact historic built structures	-1	Whilst usually encompassing some of the oldest features in the county, this type is rare and management tends to be modern. It is not generally characteristic of the county but development may negatively impact upon very ancient parts of the landscape. Development has the potential to have a slight impact on landscape character	-2	Rough ground at these sites likely preserves historic ecosystems. Large monuments were frequently bounded by old hedgerows in the post-medieval period and some of these may survive. Trees may have been left, but, alternatively, management of the monument may have required their removal. Development is likely to have a moderate impact on semi-natural components	-1.5	This type has some environmental and aesthetic value which is vulnerable to pollution. Usually open to the public and important communally. Development is highly likely to have a significant impact on amenity	-2	-14
-----------------------------	---	----	---	----	--	----	---	----	--	------	--	----	-----



Recreation - Country Park	Frequently a modern type which replaces earlier landscape types. Older hedgerows and trees may have been maintained around the perimeter. Development has the potential to have a slight impact on the legibility of earlier landscapes	-2	Archaeological remains are unlikely to be disturbed. Development is highly likely to have a significant impact on archaeological potential	-4	Few historic buildings are likely to exist at this type. Development is unlikely to impact historic built structures	-1	These are a rare and modern type in Oxfordshire and do not generally impact greatly on character. Development is unlikely to impact landscape character	-1	Some landscape reorganisation is likely to have reduced historic ecosystems present, but some trees and hedges may survive. In rural settings these may disrupt historic landscapes. In the modern period they may encourage a range of biodiversity. Development has the potential to have a slight impact on semi-natural components	-1	This type has some environmental and aesthetic value which is vulnerable to pollution. Usually open to the public and important communally. Development is highly likely to have a significant impact on amenity	-2	-11
Recreation - Golf Course	Modern types which often reorganise earlier landscapes. However, some sites may utilise old country estates and respect the perimeter boundaries of these lands. Development has the potential to have a slight impact on the legibility of earlier landscapes	-2	Archaeological remains are likely to be undisturbed, therefore, development has a potential high impact. This type frequently includes Scheduled Ancient Monuments. Development is highly likely to have a significant impact on archaeological	-4	Historic structures are likely to be rare at this type, but may be present if the site utilises a former country estate. Development has the potential to have a slight impact on historic built structures	-2	These very large sites can be particularly dominant in certain areas and influential on the character of the landscape, despite their modern date. Development is likely to have a moderate impact on landscape character	-3	This type consists of intensively managed landscapes and more natural rough ground. The latter may preserve historic ecosystems and encourage biodiversity. This type is likely to have broken up historic landscapes. Development has the potential to have a slight impact on semi-natural components	-1	The managed nature of these sites may affect their aesthetic and environmental value, however their communal importance is likely to be high. This type is likely to be vulnerable to pollution. Development is likely to have a moderate impact on amenity	-1.5	-14



Recreation - Hunting Site	A modern type where little historic legibility is likely to remain. Development is unlikely to impact on the legibility of earlier landscapes	-1	The built elements of this type are likely to have disturbed archaeological remains whilst open areas may preserve material. Development is likely to have a moderate impact on archaeological potential	-3	Few historic buildings are likely to exist at this type. Development is unlikely to impact historic built structures	-1	These are a rare and modern type in Oxfordshire and do not generally impact greatly on character. Development is unlikely to impact landscape character	-1	A mixed built and open environment which is unlikely to preserve historic ecosystems or high biodiversity. Development is unlikely to impact semi-natural components	-0.5	This type is of low aesthetic and communal value and is unlikely to be much affected by pollution. Development is unlikely to impact amenity	-0.5	-7
Recreation - Nature Reserve	A modern form of landscape management, but often preserving earlier landscapes. Some reduction in legibility through removal of trees and hedges. Development is likely to have a moderate impact on the legibility of earlier landscapes	-3	Some disturbance to archaeological remains may have occurred due to groundworks associated with drainage and water management, but remains are still likely to be present. Development is likely to have a moderate impact on archaeological potential	-3	Few historic buildings are likely to exist at this type. Development is unlikely to impact historic built structures	-1	A modern type which is likely to preserve types which were more common historically and would have been characteristic of the landscape. Development is likely to have a moderate impact on landscape character	-3	This type preserves ecosystems which would have been widespread historically. Modern management may have seen the removal of some older trees and hedgerows. Development is highly likely to have a significant impact on semi-natural components	-2	This type promotes landscape diversity and is of aesthetic and environmental value. Often open to the public, this type also has communal value. Development is highly likely to have a significant impact on amenity	-2	-14



Recreation - Other Leisure facilities	Predominantly modern built facilities which are likely to have removed traces of earlier landscapes. Development is unlikely to impact on the legibility of earlier landscapes	-1	Groundworks involved in the creation of this type are likely to have removed most archaeological material. Development is unlikely to impact archaeological potential	-1	Few historic buildings are likely to exist at this type. Development is unlikely to impact historic built structures	-1	These are a rare and modern type in Oxfordshire and do not generally impact greatly on character. Development is unlikely to impact landscape character	-1	This type is likely to have removed any historic ecosystems when constructed. Development is unlikely to impact semi-natural components	-0.5	This type has high communal value, but development would have less of an impact aesthetically or environmentally. Development is likely to have a moderate impact on amenity	-1.5	-6
Recreation - Racing Sports Sites	A predominantly modern type which is likely to have removed historic hedgerows and trees. Horse racing sites will have had less of an impact as they often are bounded by ephemeral fences or not at all. Development has the potential to have a slight impact on the legibility of earlier landscapes	-2	Some disturbance may have occurred during groundworks for associated structures, but archaeological material is likely to remain in open areas. Development is likely to have a moderate impact on archaeological potential	-3	Few historic buildings are likely to exist at this type. Development is unlikely to impact historic built structures	-1	Often a modern type, but its size and frequently open nature does affect character locally. Development is likely to have a moderate impact on landscape character	-3	It is likely that the construction of this type removed aspects of historic ecosystems, particularly hedgerows. Rough ground and open landscapes may survive, however. Development has the potential to have a slight impact on semi-natural components	-1	This type has communal value and some aesthetic and environmental value. It is likely to be vulnerable to pollution. Development is likely to have a moderate impact on amenity	-1.5	-12



Recreation - Sports Facilities	A mixture of modern and post-medieval features, often within the historic core of settlements and preserving some legibility. Development is likely to have a moderate impact on the legibility of earlier landscapes	-3	Some disturbance may have occurred during groundworks for associated structures, but archaeological material is likely to remain in open areas. Development is likely to have a moderate impact on archaeological potential	-3	Some historic buildings, such as pavilions, may be associated with this type. Development is likely to have a moderate impact on historic built structures	-3	Found in most settlements this type does have some impact on the character of a local area, being a focal point for communities. Development is likely to have a moderate impact on landscape character	-3	Largely intensively managed grass or built structures. On the perimeter rough ground and historic hedgerows and trees may survive. Development has the potential to have a slight impact on semi-natural components	-1	This type has communal value and some aesthetic and environmental value. It is likely to be vulnerable to pollution. Development is likely to have a moderate impact on amenity	-1.5	-15
Rural - Caravan/Chalet/Camping site	This type is likely to have removed hedgerows and trees, some may remain at the perimeter, but legibility will have been affected. Landscaping may also affect legibility. Development has the potential to have a slight impact on the legibility of earlier landscapes	-2	Small-scale groundworks associated with toilet blocks etc. may have disturbed archaeological remains, but most should be preserved. Development is likely to have a moderate impact on archaeological potential	-3	Few historic buildings are likely to exist at this type. Development is unlikely to impact historic built structures	-1	These are a rare and modern type in Oxfordshire and do not generally impact greatly on character. Development is unlikely to impact landscape character	-1	A landscaped and managed type created in the modern period which is likely to have removed traces of historic ecosystems. Some remnants may remain on the perimeter. Development has the potential to have a slight impact on semi-natural components	-1	This type has some communal, aesthetic, and environmental value. It is likely to be vulnerable to pollution. Development has the potential to have a slight impact on amenity	-1	-9



Rural - Country House	Typically post-medieval structures which preserve the legibility of the historic landscape. Development is highly likely to have a significant impact on the legibility of earlier landscapes	-4	Some disturbance might be anticipated from the construction of buildings, but archaeological remains are still likely to remain. Development is likely to have a moderate impact on archaeological potential	-3	This type is usually associated with buildings of historic value. Development is highly likely to have a significant impact on historic built structures	-4	Found throughout the county and significant in the organisation of the landscape, this type is important for landscape character. Development is highly likely to have a significant impact on landscape character	-4	Gardens and grounds associated with this type may preserve post-medieval designed landscapes. More natural landscapes, including woods and rough ground may also be preserved. Development is highly likely to have a significant impact on semi-natural components	-2	This type encourages landscape diversity and is of aesthetic and environmental importance. It is vulnerable to pollution. Development is highly likely to have a significant impact on amenity	-2	-19
Rural - Dwelling	Predominantly modern, but some post-medieval features. This type often reorganises the landscape to create new residential properties which affects legibility of earlier landscapes. Occasionally hedgerows are maintained. Development has the potential to have a slight impact on the legibility of earlier landscapes	-2	Groundworks associated with buildings are likely to have disturbed archaeological remains, but these are likely to survive beneath gardens. Development has the potential to have a slight impact on archaeological potential	-2	Some buildings may have historic value, particularly when older buildings have been converted for residential use. Development is likely to have a moderate impact on historic built structures	-3	Generally smaller and more modern than Country Houses, this type has less impact on landscape character. Development is unlikely to impact landscape character	-1	Intensively managed gardens are likely to have removed earlier ecosystems. Some trees and hedges may remain. Development has the potential to have a slight impact on semi-natural components	-1	This type is of low aesthetic and communal value, but associated gardens are important for the environment and may be affected by pollution. Development has the potential to have a slight impact on amenity	-1	-10



Rural - Hamlet	<p>This type frequently dates to the post-medieval period with some medieval elements. Low levels of modern development mean that historic settlement boundaries and properties have been preserved and historic legibility is maintained to a high degree. Development is highly likely to have a significant impact on the legibility of earlier landscapes</p>	-4	<p>Groundworks associated with buildings are likely to have disturbed archaeological remains, but these are likely to survive beneath gardens and in open spaces. This type is often associated with earlier settlement. Development is likely to have a moderate impact on archaeological potential</p>	-3	<p>This type is usually associated with buildings of historic value. Development is highly likely to have a significant impact on historic built structures</p>	-4	<p>Scattered small settlements are characteristic of parts of Oxfordshire. Development is highly likely to have a significant impact on landscape character</p>	-4	<p>Old trees and historic property boundaries will preserve historic ecosystems. Some modifications due to buildings will have had an impact, however. Development has the potential to have a slight impact on semi-natural components</p>	-1	<p>This type has aesthetic value and adds to landscape diversity. It is vulnerable to pollution and has some communal importance. Development is likely to have a moderate impact on amenity</p>	-1.5	-18
Rural - Hotel	<p>A mixture of modern and post-medieval features, often reusing historic buildings which preserve some legibility of earlier landscapes. Grounds associated with these tend to have reorganised the landscape. Development has the potential to have a slight impact on the legibility of earlier landscapes</p>	-2	<p>Groundworks involved in the creation of this type are likely to have removed most archaeological material, although some may survive within undeveloped grounds. Development has the potential to have a slight impact on archaeological potential</p>	-2	<p>This type may be associated with some historic buildings. Development is likely to have a moderate impact on historic built structures</p>	-3	<p>A rare type in Oxfordshire, this has little impact on the character of the county. Development is unlikely to impact landscape character</p>	-1	<p>Some elements of historic ecosystems may survive, but these are largely built and landscaped environments. Development has the potential to have a slight impact on semi-natural components</p>	-1	<p>This type is likely to have some communal and aesthetic value. Development is likely to have a moderate impact on amenity</p>	-1.5	-11



Rural - Village	This type often incorporates medieval, post-medieval, and modern elements. Legibility of earlier landscapes is frequently clear at the core of villages but may have been obscured by modern housing on the outskirts. Development is likely to have a moderate impact on the legibility of earlier landscapes	-3	Groundworks associated with buildings are likely to have disturbed archaeological remains, but these are likely to survive beneath gardens and in open spaces. This type is often associated with earlier settlement. Development is likely to have a moderate impact on archaeological potential	-3	This type is usually associated with buildings of historic value. Development is highly likely to have a significant impact on historic built structures	-4	Scattered villages are characteristic of parts of Oxfordshire. Development is highly likely to have a significant impact on landscape character	-4	Old trees and historic property boundaries will preserve historic ecosystems. Some modifications due to buildings will have had an impact, however. Development has the potential to have a slight impact on semi-natural components	-1	This type has aesthetic value and adds to landscape diversity. It is vulnerable to pollution and has some communal importance. Development is likely to have a moderate impact on amenity	-1.5	-17
-----------------	--	----	---	----	--	----	---	----	--	----	---	------	-----



Rural - Farmstead	This type often dates to the post-medieval and modern period, although some medieval sites do exist. Older sites preserve the legibility of earlier landscapes and will be vulnerable to development. Modern farms frequently reorganise the landscape. Development is likely to have a moderate impact on the legibility of earlier landscapes	-3	Groundworks associated with buildings are likely to have disturbed archaeological remains, but these are likely to survive beneath gardens and in open spaces. This type is often associated with earlier settlement. Development is likely to have a moderate impact on archaeological potential	-3	This type is usually associated with buildings of historic value. Development is highly likely to have a significant impact on historic built structures	-4	Scattered farmsteads are characteristic of parts of Oxfordshire. Development is highly likely to have a significant impact on landscape character	-4	Old trees and historic property boundaries will preserve historic ecosystems. Some modifications due to buildings will have had an impact, however. Development has the potential to have a slight impact on semi-natural components	-1	This type has aesthetic value and adds to landscape diversity. Aspects of this type are likely to be vulnerable to pollution. Development has the potential to have a slight impact on amenity	-1	-16
Unenclosed - Green	An historic type at the core of many settlements and important for the legibility of earlier landscapes. Development is highly likely to have a significant impact on the legibility of earlier landscapes	-4	Archaeological remains are likely to be undisturbed. This type will frequently coincide with earlier settlement evidence. Development is highly likely to have a significant impact on archaeological potential	-4	This type is often associated with stone crosses of historic value. Development is likely to have a moderate impact on historic built structures	-3	A rare but historically more common type which has been important for the character of villages and hamlets. Development is likely to have a moderate impact on landscape character	-3	Often preserving rough ground in the core of settlements along with historic trees and hedges. Development is highly likely to have a significant impact on semi-natural components	-2	This type has aesthetic and environmental significance and is often important to local communities. This type is particularly vulnerable to pollution and changes in rights of access. Development is highly likely to have a significant impact on amenity	-2	-18



Unenclosed - Rough Ground	An historically important type which preserves medieval open landscapes and common ground. Development is highly likely to have a significant impact on the legibility of earlier landscapes	-4	Archaeological remains are unlikely to be disturbed. Development is highly likely to have a significant impact on archaeological potential	-4	Few historic buildings are likely to exist at this type. Development is unlikely to impact historic built structures	-1	The large open areas associated with this type are very characteristic of certain parts of the county and influenced the evolution of the landscape. Development is highly likely to have a significant impact on landscape character	-4	Rough ground is usually preserved over wide areas. Development is highly likely to have a significant impact on semi-natural components	-2	This type is very important environmentally. It encourages landscape diversity and is often important to communities. The ecosystems present are likely to be vulnerable to pollution. Development is highly likely to have a significant impact on amenity	-2	-17
Urban - City	This type does not include the historic urban core of settlements and, therefore, tends to be modern in date. Legibility of earlier landscapes has often been obscured by existing urban development. Development is unlikely to impact on the legibility of earlier landscapes	-1	Groundworks are likely to have disturbed archaeological remains, but material is still likely to be preserved in places. Development has the potential to have a slight impact on archaeological potential	-2	This type sometimes includes buildings of historic value around which development has occurred. Development is likely to have a moderate impact on historic built structures	-3	Oxford is the only city in the county and the impact of this type on character is, therefore, limited. The size and importance of Oxford, however, does increase this impact. Development is likely to have a moderate impact on landscape character	-3	Little semi-natural environment is likely to survive. Development is unlikely to impact semi-natural components	-0.5	This type may have some communal value but is of little aesthetic or environmental value. Development is unlikely to impact amenity	-0.5	-10



Urban - Dwelling	Often post-medieval in date this type may preserve some legibility of earlier settlement landscapes. Development is likely to have a moderate impact on the legibility of earlier landscapes	-3	Groundworks are likely to have disturbed archaeological remains, but material is still likely to be preserved in places. Development has the potential to have a slight impact on archaeological potential	-2	This type sometimes includes buildings of historic value around which development has occurred. Development is likely to have a moderate impact on historic built structures	-3	A rare type, this does not greatly affect the character of the landscape. Development is unlikely to impact landscape character	-1	Little semi-natural environment is likely to survive. Development is unlikely to impact semi-natural components	-0.5	This type may have some aesthetic value but is of little communal or environmental importance. Development is unlikely to impact amenity	-0.5	-10
Urban - Town	This type does not include the historic urban core of settlements and, therefore, tends to be modern in date. Legibility of earlier landscapes has often been obscured by existing urban development. Development is unlikely to impact on the legibility of earlier landscapes	-1	Groundworks are likely to have disturbed archaeological remains, but material is still likely to be preserved in places. Development has the potential to have a slight impact on archaeological potential	-2	This type sometimes includes buildings of historic value around which development has occurred. Development is likely to have a moderate impact on historic built structures	-3	The towns of Oxfordshire are characteristic of their local area and important parts of the landscape. Development is highly likely to have a significant impact on landscape character	-4	Little semi-natural environment is likely to survive. Development is unlikely to impact semi-natural components	-0.5	This type may have some communal value but is of little aesthetic or environmental value. Development is unlikely to impact amenity	-0.5	-11



Water - Fresh Water Body	A mixture of naturally occurring and man-made features, some of which are modern. Small and non-intrusive they leave much of the historic landscape undisturbed. Development is likely to have a moderate impact on the legibility of earlier landscapes	-3	Archaeological material deposited within water bodies or eroded from banks does exist but is rare. Development has the potential to have a slight impact on archaeological potential	-2	Few historic buildings are likely to exist at this type. Development is unlikely to impact historic built structures	-1	This type is rare and usually quite small. It is not, therefore characteristic of the county. Development is unlikely to impact landscape character	-1	Semi-natural environments are likely to be preserved, although they will be under threat from pollution and modern interventions in the catchment areas. Development is highly likely to have a significant impact on semi-natural components	-2	This type is significant for environmental and aesthetic reasons. It is often used for recreation and is important to communities. It is particularly vulnerable to pollution. Development is highly likely to have a significant impact on amenity	-2	-11
Water - River	Whilst rivers have moved they have been and still are central to the organisation of the landscape. Development is highly likely to have a significant impact on the legibility of earlier landscapes	-4	Archaeological material deposited within water bodies or eroded from banks does exist but is rare. Development has the potential to have a slight impact on archaeological potential	-2	Few historic buildings are likely to exist at this type. Development is unlikely to impact historic built structures	-1	The river systems are characteristic of the county. Development is highly likely to have a significant impact on landscape character	-4	Semi-natural environments are likely to be preserved, although they will be under threat from pollution and modern interventions in the catchment areas. Development is highly likely to have a significant impact on semi-natural components	-2	This type is significant for environmental and aesthetic reasons. It is often used for recreation and is important to communities. It is particularly vulnerable to pollution. Development is highly likely to have a significant impact on amenity	-2	-15



Water - Water Meadow	Typically an early modern type, but often using existing enclosures and maintaining hedgerows and trees. Development is likely to have a moderate impact on the legibility of earlier landscapes	-3	Archaeological remains are likely to be largely undisturbed. Some impact may have occurred from the digging of drainage ditches. Development is likely to have a moderate impact on archaeological potential	-3	Few historic buildings are likely to exist at this type. Development is unlikely to impact historic built structures	-1	A very rare type which contributes little to the character of the county. Development is unlikely to impact landscape character	-1	Preservation of older trees and hedges increase the survival of historic ecosystems. Intensive cultivation may have altered the natural environment within fields. Development has the potential to have a slight impact on semi-natural components	-1	An aesthetically and environmentally valuable type which will be vulnerable to pollution. Development has the potential to have a slight impact on amenity	-1	-10
Woodland - Ancient Woodland	An historic type which preserves the legibility of earlier landscapes. Areas will have been lost to clearance. Development is highly likely to have a significant impact on the legibility of earlier landscapes	-4	Lack of development is likely to have left archaeological remains undisturbed. Development is highly likely to have a significant impact on archaeological potential	-4	There may be a few historic buildings associated with this type, but these are likely to be rare. Development has the potential to have a slight impact on historic built structures	-2	No longer found throughout the county but once characteristic of large swathes of the landscape. Influential in the organisation of the landscape. Development is highly likely to have a significant impact on landscape character	-4	Historic ecosystems are preserved at this type. Ancient wood species and wood coverage will survive. Development is highly likely to have a significant impact on semi-natural components	-2	A high value amenity type with aesthetic and environmental importance. Often with communal significance and traversed by public rights of way. Vulnerable to pollution. Development is highly likely to have a significant impact on amenity	-2	-18



Woodland - Plantation	A typically modern type which often reorganises earlier landscapes. Plantations can be more sensitive to these landscapes by maintaining existing boundaries. Development has the potential to have a slight impact on the legibility of earlier landscapes	-2	Some possible disturbance during planting, but archaeological remains are likely to have been largely unaffected. Development is highly likely to have a significant impact on archaeological potential	-4	Few historic buildings are likely to exist at this type. Development is unlikely to impact historic built structures	-1	An increasingly common type which dominates certain locales and contributes to the character of the current landscape. Development is likely to have a moderate impact on landscape character	-3	Mixed and less dense plantations can encourage the re-establishment of historic ecosystems but frequently this type alters local habitats. Development is likely to have a moderate impact on semi-natural components	-1.5	This type has some aesthetic value and can contribute to the environment. It is vulnerable to pollution. Development is likely to have a moderate impact on amenity	-1.5	-13
Woodland - Secondary Woodland	This type can be both post-medieval and modern and may increase historic legibility as fieldscapes revert back to woodland naturally. Development is likely to have a moderate impact on the legibility of earlier landscapes	-3	Lack of development is likely to have left archaeological remains undisturbed. Development is highly likely to have a significant impact on archaeological potential	-4	There may be a few historic buildings associated with this type, but these are likely to be rare. Development has the potential to have a slight impact on historic built structures	-2	An important part of the wooded landscape which is characteristic of swathes of the county. Development is highly likely to have a significant impact on landscape character	-4	Historic ecosystems may re-establish themselves in these locations. Development is highly likely to have a significant impact on semi-natural components	-2	A high value amenity type with aesthetic and environmental importance. Often with communal significance and traversed by public rights of way. Vulnerable to pollution. Development is highly likely to have a significant impact on amenity	-2	-17



Woodland - Woodland Pasture	This type is often associated with wooded areas and parkland. It preserves some legibility, therefore, of earlier landscapes. Development is likely to have a moderate impact on the legibility of earlier landscapes	-3	Lack of development is likely to have left archaeological remains undisturbed. Development is highly likely to have a significant impact on archaeological potential	-4	There may be a few historic buildings associated with this type, but these are likely to be rare. Development has the potential to have a slight impact on historic built structures	-2	A rare woodland type, the impact it has on character is more limited than others. Its association with Ancient Woodland and Parkland, however, does increase its significance. Development is likely to have a moderate impact on landscape character	-3	Older trees and hedgerows are often preserved at this type. Rough ground can also be found here and low levels of cultivation mean that historic ecosystems may exist. Development is highly likely to have a significant impact on semi-natural components	-2	This type is aesthetically of value and has environmental importance. Development is likely to have a moderate impact on amenity	-1.5	-16
-----------------------------------	---	----	--	----	--	----	---	----	---	----	--	------	-----



Significance Values

Occurrence	Value	Adjusted Occurrence Value
Abundant	1	(Value*Period Value)/5
Common	2	(Value*Period Value)/5
Occasional	3	(Value*Period Value)/5
Rare	4	(Value*Period Value)/5
Very Rare	5	(Value*Period Value)/5

Trajectory of Change	Value	Biodiversity Potential	Value	Archaeological Potential	Value	Period	Value
Increasing Rapidly	1	Low	1	Low	1	Modern	1
Increasing Moderately	2	Low-Medium	2	Medium	3	Post-Medieval	2
Increasing Slowly	3	Medium	3	High	6	Medieval - Modern	3
Stable	4	Medium-High	4			Medieval - Post-Medieval	4
Declining Slowly	5	High	5			Medieval	5
Declining Rapidly	6					Prehistoric	6
Declining Critically	7						

Conservation Principles							
Evidence (same as Archaeological Potential)	Value	Historical	Value	Aesthetic	Value	Communal	Value
Low	1	Low	1	Low	1	Low	1
Medium	3	Medium	3	Medium	2	Medium	2
High	6	High	6	High	3	High	3

**Archaeological or Evidential Value**

Conservation Principle	Definition
Evidential Value	The potential of a place to yield evidence about past human activity. A simple indicator of the general correlation of archaeological sites and historic buildings with this type. - This potential refers to the HLC Type as it exists today, not the archaeological potential when it was being created.

Value	Definition
High (6)	Unlikely for there to have been wholesale truncation or destruction of features; significant archaeological deposits or historic buildings may still survive.
Medium (3)	Likely that archaeological deposits and historic buildings have been truncated or damaged, but some features may survive in isolated areas.
Low (1)	Likely that all potential for archaeological deposits and historic buildings has been removed within the area of disturbance.

HLC Type	Evidential Value
Reservoir	1
Utilities	1
Sewerage Treatment works	1
Waste Disposal	1
Educational Facility	3
Oxford College	6
Health Care Facility	3
Religious and Funerary	6
Gov Office and Civic Centre	3
Immigration Detention Centre	1
Police station	1
Prison	3
Park and Ride	1
Bank	1
Business Park	1
Fish Farm	3
Office/Commercial	1
Offices	1
Shops	1
Retail park	1
Shopping Centre	1
Road Side Service Centre	3
Road	3
Main Road	1
Major Road Junction	1



Bridge	1
Motorways	1
Bike Path/ bridleway	3
Ridgeway	6
Car Park	3
Canals and Locks	1
Rail transport sites	1
Airfield (Commercial)	3
Telecommunications	1
Open Field System	6
Ancient Enclosure	6
Closes	6
Crofts (medieval & Post Medieval)	6
Ladder Field System	6
Squatter Enclosure	6
Assarted Enclosure	6
Piecemeal Enclosure	6
Planned Enclosure	6
Prairie / Amalgamated Enclosure	6
Enclosed Reclaimed land	1
Reorganised Enclosures	6
Paddocks and Stables	6
Processing industry	1
Manufacturing	1
Mill / Mill Complex	3
Energy Industry	1
Extractive Works	1
Flooded Extractive pits	1
Depot	1
Industrial Estate	1
Scrap Yard	1
Timber Yard	1
Castle	6
Hillfort	6
Defence Site	6
Military base	6
Military Airfield	3
Military Barracks	1
Military Shooting Range	6
Military Communications	1



Allotment	6
Orchard	6
Vineyard	6
Nursery/ Garden Centre	6
Urban Garden	3
Parkland / Designed Landscape	6
Deer Park	6
Ornamental water body	6
Domestic Garden	3
Sports Facilities	3
Racing Sports Sites	3
Other Leisure facilities	1
Community Centre	1
Country Park	6
Public Park	6
Golf Course	6
Hunting Site	3
Nature Reserve	6
Managed Archaeological Site	6
Village	6
Hamlet	6
Rural Dwelling	6
Rural Hotel	1
Rural Caravan/Chalet/ Camping site	6
Country House	6
Farmstead	6
Unenclosed Green	6
Unenclosed Rough Ground	6
Historic Urban Core	6
City	6
Town	6
Urban Dwelling	3
Urban Hotel	1
Urban Public House	3
Urban Market	3
Urban Caravan and Camp site/ chalet site	3
River	1
Fresh Water Body	1



Water Meadow	6
Watercress Beds	6
Ancient Woodland	6
Secondary Woodland	6
Plantation	6
Woodland Pasture	6



The significance of each HLC Type in the case study areas

HLC Type	Occurrence	% of County	Value	Weighting Value (using period)	Adjusted Occurrence Value	Trajectory of Change	% Gain or Loss	Value	Biodiversity	Value	Archaeology	Value	Period	Value	Conservation Principles					Significance Value		
															Historical	Value	Aesthetic	Value	Communal		Value	Conservation Value
Civic Amenities - Reservoir	Very Rare	0.086	5	1	1	Increasing Rapidly	715.29	1	High	5	Low	1	Modern	1	Low	1	Medium	2	Medium	2	6	14
Civic Amenities - Utilities	Very Rare	0.069	5	1	1	Increasing Rapidly	8870.83	1	Low	1	Low	1	Modern	1	Low	1	Low	1	Low	1	4	8
Civic Amenities - Sewerage Treatment works	Very Rare	0.082	5	1	1	Increasing Rapidly	∞	1	Low-Medium	2	Low	1	Modern	1	Low	1	Low	1	Low	1	4	9
Civic Amenities - Waste Disposal	Very Rare	0.050	5	1	1	Increasing Rapidly	∞	1	Low	1	Low	1	Modern	1	Low	1	Low	1	Low	1	4	8
Civil Provision - Educational Facility	Rare	0.534	4	1	0.8	Increasing Rapidly	1768.13	1	Low	1	Medium	3	Modern	1	High	6	Medium	2	High	3	14	18
Civil Provision - Oxford College	Very Rare	0.036	5	3	3	NA	NA	NA	Low-Medium	2	High	6	Medieval - Modern	3	High	6	High	3	High	3	18	#VALUE!
Civil Provision - Health Care Facility	Very Rare	0.057	5	1	1	Increasing Rapidly	181.97	1	Low-Medium	2	Medium	3	Modern	1	Low	1	Low	1	High	3	8	13
Civil Provision - Religious and Funerary	Very Rare	0.046	5	2	2	Increasing Slowly	18.37	3	Low-Medium	2	High	6	Post-Medieval	2	High	6	Medium	2	High	3	17	26
Civil Provision - Gov Office and Civic Centre	Very Rare	0.014	5	1	1	Increasing Rapidly	∞	1	Low	1	Medium	3	Modern	1	Medium	3	Low	1	High	3	10	14
Civil Provision - Immigration Detention Centre	Very Rare	0.004	5	1	1	Increasing Rapidly	∞	1	Low	1	Low	1	Modern	1	Low	1	Low	1	Low	1	4	8



Civil Provision - Police station	Very Rare	0.002	5	1	1	Increasing Rapidly	∞	1	Low	1	Low	1	Modern	1	Low	1	Low	1	High	3	6	10
Civil Provision - Prison	Very Rare	0.011	5	1	1	Increasing Rapidly	∞	1	Low	1	Medium	3	Modern	1	Low	1	Low	1	Medium	2	7	11
Civil Provision - Park and Ride	Very Rare	0.013	5	1	1	Increasing Rapidly	∞	1	Low	1	Low	1	Modern	1	Low	1	Low	1	Medium	2	5	9
Commercial - Bank	Very Rare	0.000	5	1	1	NA	NA	NA	Low	1	Low	1	Modern	1	Low	1	Low	1	Low	1	4	#VALUE!
Commercial - Business Park	Very Rare	0.208	5	1	1	Increasing Rapidly	∞	1	Low	1	Low	1	Modern	1	Low	1	Low	1	Low	1	4	8
Commercial - Fish Farm	Very Rare	0.003	5	1	1	Increasing Rapidly	∞	1	Medium	3	Medium	3	Modern	1	Low	1	Low	1	Low	1	6	12
Commercial - Office/Commercial	Very Rare	0.004	5	1	1	NA	NA	NA	Low	1	Low	1	Modern	1	Low	1	Low	1	Medium	2	5	#VALUE!
Commercial - Offices	Very Rare	0.020	5	1	1	NA	NA	NA	Low	1	Low	1	Modern	1	Low	1	Low	1	Medium	2	5	#VALUE!
Commercial - Shops	Very Rare	0.003	5	1	1	NA	NA	NA	Low	1	Low	1	Modern	1	Low	1	Low	1	Medium	2	5	#VALUE!
Commercial - Retail park	Very Rare	0.042	5	1	1	Increasing Rapidly	∞	1	Low	1	Low	1	Modern	1	Low	1	Low	1	Low	1	4	8
Commercial - Shopping Centre	Very Rare	0.021	5	1	1	Increasing Rapidly	∞	1	Low	1	Low	1	Modern	1	Low	1	Low	1	Medium	2	5	9
Commercial - Road Side Service Centre	Very Rare	0.016	5	1	1	Increasing Rapidly	∞	1	Low	1	Medium	3	Modern	1	Low	1	Low	1	Low	1	6	10
Communication - Road	Very Rare	0.010	5	3	3	NA	NA	NA	Low	1	Medium	3	Medieval - Modern	3	Medium	3	Medium	2	High	3	11	#VALUE!
Communication - Main Road	Very Rare	0.235	5	1	1	Increasing Rapidly	621.96	1	Low	1	Low	1	Modern	1	Low	1	Low	1	Medium	2	5	9
Communication - Major Road Junction	Very Rare	0.098	5	1	1	Increasing Rapidly	5994.51	1	Low	1	Low	1	Modern	1	Low	1	Low	1	Medium	2	5	9
Communication - Bridge	Very Rare	0.000	5	3	3	NA	NA	NA	Low	1	Low	1	Medieval - Modern	3	Medium	3	Medium	2	High	3	9	#VALUE!
Communication - Motorways	Very Rare	0.146	5	1	1	Increasing Rapidly	∞	1	Low	1	Low	1	Modern	1	Low	1	Low	1	Medium	2	5	9



Communication - Bike Path/bridleway	Very Rare	0.003	5	2	2	Increasing Rapidly	345.03	1	Medium	3	Medium	3	Post-Medieval	2	Medium	3	Medium	2	High	3	11	19
Communication - Ridgeway	Very Rare	0.016	5	6	6	Stable	0.00	4	Medium	3	High	6	Prehistoric	6	High	6	High	3	High	3	18	37
Communication - Car Park	Very Rare	0.006	5	1	1	NA	NA	NA	Low	1	Medium	3	Modern	1	Low	1	Low	1	Medium	2	7	#VALUE!
Communication - Canals and Locks	Very Rare	0.063	5	2	2	Stable	-2.34	4	High	5	Low	1	Post-Medieval	2	High	6	High	3	High	3	13	26
Communication - Rail transport sites	Very Rare	0.383	5	2	2	Increasing Moderately	22.83	2	Low-Medium	2	Low	1	Post-Medieval	2	High	6	Low	1	High	3	11	19
Communication - Airfield (Commercial)	Very Rare	0.371	5	1	1	Increasing Rapidly	∞	1	Low-Medium	2	Medium	3	Modern	1	Low	1	Low	1	Medium	2	7	12
Communication - Telecommunications	Very Rare	0.005	5	1	1	Increasing Rapidly	∞	1	Medium	3	Low	1	Modern	1	Low	1	Low	1	Low	1	4	10
Open Field System	Very Rare	0.004	5	5	5	Declining Critically	-98.95	7	Medium	3	High	6	Medieval	5	High	6	High	3	Medium	2	17	37
Ancient Enclosure	Rare	1.112	4	2	1.6	Declining Critically	-63.38	7	Medium	3	High	6	Post-Medieval	2	High	6	High	3	Medium	2	17	31
Closes	Very Rare	0.034	5	2	2	Declining Critically	-75.76	7	Medium	3	High	6	Post-Medieval	2	High	6	High	3	Medium	2	17	31
Crofts (medieval & Post Medieval)	Very Rare	0.030	5	2	2	Declining Critically	-61.07	7	Medium	3	High	6	Post-Medieval	2	High	6	High	3	Medium	2	17	31
Ladder Field System	Very Rare	0.079	5	2	2	Declining Rapidly	-21.98	6	Medium	3	High	6	Post-Medieval	2	High	6	High	3	Medium	2	17	30
Squatter Enclosure	Very Rare	0.005	5	2	2	Declining Rapidly	-47.68	6	Medium	3	High	6	Post-Medieval	2	High	6	High	3	Medium	2	17	30
Assarted Enclosure	Very Rare	0.321	5	2	2	Declining Rapidly	-28.56	6	High	5	High	6	Post-Medieval	2	High	6	High	3	Medium	2	17	32



Piecemeal Enclosure	Common	9.547	2	2	0.8	Declining Critically	-51.33	7	Medium	3	High	6	Post-Medieval	2	High	6	High	3	Medium	2	17	30
Planned Enclosure	Common	14.266	2	2	0.8	Declining Critically	-52.44	7	Low-Medium	2	High	6	Post-Medieval	2	High	6	Medium	2	Medium	2	16	28
Prairie / Amalgamated Enclosure	Abundant	20.321	1	1	0.2	Increasing Rapidly	116.14	1	Low-Medium	2	High	6	Modern	1	Low	1	Low	1	Low	1	9	13
Enclosure - Reclaimed land	Very Rare	0.048	5	1	1	Increasing Rapidly	1249.19	1	Medium-High	4	Low	1	Modern	1	Low	1	Low	1	Low	1	4	11
Reorganised Enclosures	Abundant	27.321	1	1	0.2	Increasing Moderately	44.92	2	Low-Medium	2	High	6	Modern	1	Low	1	Medium	2	Low	1	10	15
Enclosure - Paddocks and Stables	Rare	0.695	4	1	0.8	Increasing Rapidly	3750.26	1	Low-Medium	2	High	6	Modern	1	Low	1	Medium	2	Low	1	10	15
Industry - Processing industry	Very Rare	0.004	5	1	1	Increasing Rapidly	661.19	1	Low	1	Low	1	Modern	1	Low	1	Low	1	Low	1	4	8
Industry - Manufacturing	Very Rare	0.052	5	1	1	Declining Slowly	-15.90	5	Low	1	Low	1	Modern	1	Low	1	Low	1	Low	1	4	12
Industry -Mill / Mill Complex	Very Rare	0.020	5	2	2	Declining Critically	-57.43	7	Low-Medium	2	Medium	3	Post-Medieval	2	High	6	High	3	Medium	2	14	27
Industry -Energy Industry	Very Rare	0.026	5	1	1	Increasing Rapidly	∞	1	Low	1	Low	1	Modern	1	Low	1	Low	1	Low	1	4	8
Industry - Extractive Works	Very Rare	0.363	5	1	1	Increasing Rapidly	205.51	1	Low-Medium	2	Low	1	Modern	1	Low	1	Low	1	Low	1	4	9
Industry - Flooded Extractive pits	Very Rare	0.483	5	1	1	Increasing Rapidly	∞	1	Medium-High	4	Low	1	Modern	1	Low	1	Medium	2	Medium	2	6	13
Industry - Depot	Very Rare	0.006	5	1	1	Increasing Rapidly	∞	1	Low	1	Low	1	Modern	1	Low	1	Low	1	Low	1	4	8
Industry - Industrial Estate	Rare	0.557	4	1	0.8	Increasing Rapidly	56370.66	1	Low	1	Low	1	Modern	1	Low	1	Low	1	Low	1	4	8



Industry -Scrap Yard	Very Rare	0.008	5	1	1	Increasing Rapidly	∞	1	Low	1	Low	1	Modern	1	Low	1	Low	1	Low	1	4	8
Industry -Timber Yard	Very Rare	0.004	5	1	1	Increasing Rapidly	∞	1	Low	1	Low	1	Modern	1	Low	1	Low	1	Low	1	4	8
Military - Castle	Very Rare	0.001	5	5	5	Stable	0.00	4	Medium	3	High	6	Medieval	5	High	6	High	3	High	3	18	35
Military - Hillfort	Very Rare	0.003	5	6	6	Declining Critically	-79.78	7	High	5	High	6	Prehistoric	6	High	6	High	3	High	3	18	42
Military - Defence Site	Very Rare	0.000	5	4	4	NA	NA	NA	Low	1	High	6	Medieval - Post-Medieval	4	High	6	High	3	High	3	18	#VALUE!
Military base	Very Rare	0.004	5	1	1	Increasing Rapidly	∞	1	Low-Medium	2	High	6	Modern	1	Medium	3	Low	1	Low	1	11	16
Military - Military Airfield	Rare	0.591	4	1	0.8	Increasing Rapidly	∞	1	Medium	3	Medium	3	Modern	1	Low	1	Low	1	Low	1	6	12
Military - Barracks	Very Rare	0.027	5	1	1	Increasing Rapidly	∞	1	Low	1	Low	1	Modern	1	Medium	3	Low	1	Low	1	6	10
Military - Shooting Range	Very Rare	0.010	5	1	1	Declining Rapidly	-46.13	6	Medium	3	High	6	Modern	1	Low	1	Low	1	Low	1	9	20
Military - Communications	Very Rare	0.000	5	1	1	Increasing Rapidly	∞	1	Low	1	Low	1	Modern	1	Low	1	Low	1	Low	1	4	8
Orchard and Hort - Allotment	Very Rare	0.104	5	1	1	Declining Rapidly	-42.50	6	High	5	High	6	Modern	1	Medium	3	Medium	2	High	3	14	27
Orchard and Hort - Orchard	Very Rare	0.059	5	2	2	Declining Critically	-69.01	7	Medium-High	4	High	6	Post-Medieval	2	Medium	3	High	3	High	3	15	30
Orchard and Hort - Vineyard	Very Rare	0.004	5	1	1	Increasing Rapidly	78.11	1	Medium	3	High	6	Modern	1	Low	1	Medium	2	Low	1	10	16
Orchard and Hort - Nursery/ Garden Centre	Very Rare	0.060	5	1	1	Increasing Rapidly	437.54	1	Medium	3	High	6	Modern	1	Low	1	Low	1	Medium	2	10	16
Orchard and Hort - Urban Garden	Very Rare	0.001	5	1	1	NA	NA	NA	Medium-High	4	Medium	3	Modern	1	Low	1	Medium	2	High	3	9	#VALUE!
Orn-Parkland / Designed Landscape	Occasional	2.441	3	2	1.2	Declining Slowly	-8.63	5	High	5	High	6	Post-Medieval	2	High	6	High	3	High	3	18	31



Orn -Deer Park	Very Rare	0.136	5	2	2	Declining Slowly	-7.34	5	High	5	High	6	Post-Medieval	2	High	6	High	3	High	3	18	32
Orn -Ornamental water body	Very Rare	0.042	5	2	2	Stable	3.37	4	High	5	High	6	Post-Medieval	2	High	6	High	3	High	3	18	31
Orn -Domestic Garden	Very Rare	0.116	5	1	1	Increasing Moderately	23.59	2	High	5	Medium	3	Modern	1	Medium	3	High	3	Medium	2	11	20
Recreation - Sports Facilities	Very Rare	0.310	5	1	1	Increasing Rapidly	5827.54	1	Low-Medium	2	Medium	3	Modern	1	Low	1	Low	1	High	3	8	13
Recreation - Racing Sports Sites	Very Rare	0.203	5	1	1	Increasing Rapidly	194.63	1	Medium	3	Medium	3	Modern	1	Low	1	Low	1	Low	1	6	12
Recreation - Other Leisure facilities	Very Rare	0.157	5	1	1	Increasing Rapidly	1721.39	1	Low-Medium	2	Low	1	Modern	1	Low	1	Low	1	Medium	2	5	10
Recreation - Community Centre	Very Rare	0.003	5	1	1	Increasing Rapidly	∞	1	Low	1	Low	1	Modern	1	Low	1	Low	1	High	3	6	10
Recreation - Country Park	Very Rare	0.092	5	1	1	Increasing Rapidly	2062.12	1	High	5	High	6	Modern	1	Medium	3	Medium	2	High	3	14	22
Recreation - Public Park	Very Rare	0.052	5	1	1	Increasing Rapidly	∞	1	Medium	3	High	6	Modern	1	Medium	3	Medium	2	High	3	14	20
Recreation - Golf Course	Rare	0.769	4	1	0.8	Increasing Rapidly	∞	1	Medium	3	High	6	Modern	1	Low	1	Medium	2	Low	1	10	16
Recreation - Hunting Site	Very Rare	0.002	5	1	1	Increasing Rapidly	∞	1	Low	1	Medium	3	Modern	1	Low	1	Low	1	Low	1	6	10
Recreation - Nature Reserve	Very Rare	0.171	5	1	1	Increasing Rapidly	∞	1	High	5	High	6	Modern	1	Medium	3	High	3	High	3	15	23
Managed Archaeological Site	Very Rare	0.022	5	6	6	Increasing Rapidly	518.78	1	Medium-High	4	High	6	Prehistoric	6	High	6	High	3	High	3	18	35
Rural - Village	Occasional	3.569	3	3	1.8	Increasing Rapidly	107.37	1	Low-Medium	2	High	6	Medieval-Modern	3	High	6	High	3	High	3	18	26



Rural - Hamlet	Rare	0.542	4	3	2.4	Increasing Rapidly	60.90	1	Low-Medium	2	High	6	Medieval - Modern	3	High	6	High	3	High	3	18	26
Rural - Dwelling	Very Rare	0.047	5	2	2	Increasing Moderately	47.52	2	Low-Medium	2	High	6	Post-Medieval	2	Medium	3	Medium	2	Low	1	12	20
Rural - Hotel	Very Rare	0.016	5	1	1	Increasing Rapidly	135.76	1	Low-Medium	2	Low	1	Modern	1	Medium	3	Medium	2	Medium	2	8	13
Rural - Caravan/Chalet/Camping site	Very Rare	0.073	5	1	1	Increasing Rapidly	∞	1	Low-Medium	2	High	6	Modern	1	Low	1	Low	1	Medium	2	10	15
Rural - Country House	Very Rare	0.212	5	2	2	Stable	-0.81	4	Medium	3	High	6	Post-Medieval	2	High	6	Medium	2	Low	1	15	26
Rural - Farmstead	Rare	1.690	4	2	1.6	Increasing Moderately	39.71	2	Medium	3	High	6	Post-Medieval	2	Medium	3	Medium	2	Medium	2	13	22
Unenclosed - Green	Very Rare	0.032	5	2	2	Declining Slowly	-9.41	5	Medium	3	High	6	Post-Medieval	2	High	6	High	3	High	3	18	30
Unenclosed - Rough Ground	Rare	0.709	4	2	1.6	Declining Critically	-67.70	7	High	5	High	6	Post-Medieval	2	High	6	High	3	High	3	18	34
Urban - Historic Urban Core	Very Rare	0.197	5	5	5	Stable	-1.65	4	Low	1	High	6	Medieval	5	High	6	High	3	High	3	18	33
Urban - City	Rare	0.679	4	3	2.4	Increasing Rapidly	∞	1	Low	1	High	6	Medieval - Modern	3	Medium	3	Medium	2	High	3	14	21
Urban - Town	Rare	1.572	4	3	2.4	Increasing Rapidly	3244.25	1	Low	1	High	6	Medieval - Modern	3	Medium	3	Medium	2	Medium	2	13	20
Urban - Dwelling	Very Rare	0.001	5	2	2	Declining Critically	-51.52	7	Low	1	Medium	3	Post-Medieval	2	Medium	3	Medium	2	Medium	2	10	22
Urban - Hotel	Very Rare	0.003	5	1	1	Increasing Rapidly	∞	1	Low	1	Low	1	Modern	1	Medium	3	Medium	2	Medium	2	8	12
Urban - Public House	Very Rare	0.001	5	1	1	Increasing Rapidly	∞	1	Low	1	Medium	3	Modern	1	Medium	3	Medium	2	Medium	2	10	14



Urban - Market	Very Rare	0.001	5	1	1	Increasing Rapidly	∞	1	Low	1	Medium	3	Modern	1	Medium	3	Medium	2	High	3	11	15
Urban - Caravan and Camp site/ chalet site	Very Rare	0.007	5	1	1	Increasing Rapidly	∞	1	Low-Medium	2	Medium	3	Modern	1	Low	1	Low	1	Low	1	6	11
Water - River	Very Rare	0.316	5	6	6	Stable	-0.81	4	High	5	Low	1	Prehistoric	6	High	6	High	3	High	3	13	34
Water - Fresh Water Body	Very Rare	0.077	5	1	1	Increasing Slowly	19.56	3	High	5	Low	1	Modern	1	High	6	High	3	High	3	13	23
Water - Water Meadow	Very Rare	0.208	5	2	2	Declining Rapidly	-38.86	6	Medium	3	High	6	Post-Medieval	2	High	6	High	3	High	3	18	31
Water - Watercress Beds	Very Rare	0.002	5	1	1	Increasing Rapidly	185.75	1	Low-Medium	2	High	6	Modern	1	High	6	Medium	2	Low	1	15	20
Woodland - Ancient Woodland	Occasional	2.905	3	4	2.4	Stable	-2.88	4	High	5	High	6	Medieval - Post-Medieval	4	High	6	High	3	High	3	18	33
Woodland - Secondary Woodland	Occasional	2.053	3	2	1.2	Increasing Rapidly	60.25	1	Medium-High	4	High	6	Post-Medieval	2	Medium	3	High	3	High	3	15	23
Woodland - Plantation	Rare	1.586	4	1	0.8	Increasing Rapidly	156.67	1	Medium	3	High	6	Modern	1	Low	1	Medium	2	Medium	2	11	17
Woodland - Woodland Pasture	Very Rare	0.157	5	1	1	Declining Rapidly	-21.34	6	Medium	3	High	6	Modern	1	High	6	High	3	High	3	18	29



Capacity for Urban Development

HLC Type in Urban Fringe	Impact of Urban Development Value	Significance Value	Sensitivity to Urban Development Value	Sensitivity to Urban Development Rating	Sensitivity to Urban Development Category
Civic Amenities - Reservoir	-7	14.0	-98	Low-Medium	2
Civic Amenities - Sewerage Treatment Works	-7.5	9.0	-67.5	Low	1
Civic Amenities - Utilities	-8	8.0	-64	Low	1
Civic Amenities - Waste Disposal	-5	8.0	-40	Low	1
Civil Provision - Educational Facility	-14	17.8	-249.2	Medium	3
Civil Provision - Gov Office and Civic Centre	-10.5	14.0	-147	Low-Medium	2
Civil Provision - Health Care Facility	-12.5	13.0	-162.5	Low-Medium	2
Civil Provision - Park and Ride	-5	9.0	-45	Low	1
Civil Provision - Religious and Funerary	-20	26.0	-520	High	5
Commercial - Business Park	-5	8.0	-40	Low	1
Commercial -Shopping Centre	-5	9.0	-45	Low	1
Communication - Main Road	-6	9.0	-54	Low	1
Communication -Bike Path/ bridleway	-12.5	19.0	-237.5	Medium	3
Communication -Canals and Locks	-15.5	26.0	-403	Medium-High	4
Communication -Major Road Junction	-5	9.0	-45	Low	1
Communication -Motorways	-5	9.0	-45	Low	1
Communication -Rail transport sites	-14	19.0	-266	Medium-High	4
Ancient Enclosure	-17	30.6	-520.2	High	5
Crofts (medieval & Post Medieval)	-18	31.0	-558	High	5
Enclosure - Reclaimed land	-5.5	11.0	-60.5	Low	1
Enclosure - Paddocks and Stables	-12.5	14.8	-185	Medium	3
Piecemeal Enclosure	-16	29.8	-476.8	High	5



Planned Enclosure	-14.5	27.8	-403.1	Medium-High	4
Prairie / Amalgamated Enclosure	-11	13.2	-145.2	Low-Medium	2
Reorganised Enclosures	-10	15.2	-152	Low-Medium	2
Industry -Extractive Works	-6	9.0	-54	Low	1
Industry -Flooded Extractive pits	-8	13.0	-104	Low-Medium	2
Industry -Industrial Estate	-5	7.8	-39	Low	1
Industry -Mill / Mill Complex	-12.5	27.0	-337.5	Medium-High	4
Military - Military Airfield	-12	11.8	-141.6	Low-Medium	2
Military - Shooting Range	-9	20.0	-180	Low-Medium	2
Orchard and Hort - Allotment	-14.5	27.0	-391.5	Medium-High	4
Orchard and Hort - Nursery/ Garden Centre	-9	16.0	-144	Low-Medium	2
Orn -Domestic Garden	-12.5	20.0	-250	Medium	3
Orn-Parkland / Designed Landscape	-19	31.2	-592.8	High	5
Managed Archaeological Site	-13.5	35.0	-472.5	High	5
Recreation - Country Park	-11	22.0	-242	Medium	3
Recreation - Golf Course	-13.5	15.8	-213.3	Medium	3
Recreation - Hunting Site	-7	10.0	-70	Low-Medium	2
Recreation - Nature Reserve	-14	23.0	-322	Medium-High	4
Recreation - Other Leisure facilities	-6	10.0	-60	Low	1
Recreation - Racing Sports Sites	-11.5	12.0	-138	Low-Medium	2
Recreation -Sports Facilities	-14.5	13.0	-188.5	Medium	3
Rural - Caravan/Chalet/ Camping site	-9	15.0	-135	Low-Medium	2
Rural - Country House	-19	26.0	-494	High	5
Rural - Dwelling	-10	20.0	-200	Medium	3
Rural - Hamlet	-17.5	26.4	-462	High	5
Rural - Hotel	-10.5	25.8	-270.9	Medium-High	4
Rural - Village	-16.5	25.8	-425.7	Medium-High	4
Rural -Farmstead	-16	21.6	-345.6	Medium-High	4



Unenclosed -Green	-18	30.0	-540	High	5
Unenclosed -Rough Ground	-17	33.6	-571.2	High	5
Urban - City	-10	21.4	-214	Medium	3
Urban - Dwelling	-10	22.0	-220	Medium	3
Urban - Town	-11	20.4	-224.4	Medium	3
Water - Fresh Water Body	-11	23.0	-253	Medium-High	4
Water - River	-15	34.0	-510	High	5
Water - Water Meadow	-10	31.0	-310	Medium-High	4
Woodland - Ancient Woodland	-18	33.4	-601.2	High	5
Woodland -Plantation	-13	16.8	-218.4	Medium	3
Woodland -Secondary Woodland	-17	23.2	-394.4	Medium-High	4
Woodland -Woodland Pasture	-15.5	29.0	-449.5	High	5

Quintiles

-601.2	100%
-444.74	80%
-251.8	60%
-182	40%
-68	20%
-39	0

Quintiles (%)	Rating	Category
0-20	Low	1
20-40	Low-Medium	2
40-60	Medium	3
60-80	Medium-High	4
80-100	High	5