

FOSTERING
IN OXFORDSHIRE
oxfordshire.gov.uk/fostering



Supported Lodgings

Help a teenager to succeed.



**OXFORDSHIRE
COUNTY COUNCIL**

Supported lodgings

Helping young people prepare for independence

Supported lodgings is when a young person lives with a supported lodgings carer providing up to ten hours support per week.

The aim is to provide a safe and supported setting to help young people move successfully to living independently. The young person would be aged 16 to 24.

How does supported lodgings work?

Supported lodgings are where a young person lives with a family or a single carer who has a spare room in their house.

The carer would need to be able to offer the young person a room of their own, provide guidance and demonstrate practical skills so they are able to move on into more independent accommodation.

Along with providing accommodation and meals, you will also help them to develop skills such as budgeting, shopping and preparing their own meals to help promote confidence and independence.

Your role is to support the young person with positive progress, raising any concerns with your social worker.

What other support will I receive?

The carer will receive on-going support from a supported lodgings social worker and the young person will also have an allocated worker who they meet with on a regular basis.

The supported lodgings worker will get to know you and the young person staying with you.

The young people?

We will share all the relevant information about the young person we are thinking about placing with you. You will get the opportunity to meet them beforehand to make a decision about them living with you.

The expectation is that when the young person's placement comes to an end they are able to live independently in the private/social housing sector.



Could I provide supported lodgings?

Things to think about

We are looking for resourceful people who want to work with young people.

Before you can begin you will need to participate in an assessment and statutory checks process, this will include a DBS check.

We will provide regular training to help you understand the demands and challenges involved and offer guidance and support.

When a young person is placed with you a placement agreement will be completed which sets out all arrangements and house rules. The young person pays a service charge for their supported lodgings and in addition we pay you an allowance while the young person is with you.

Applicants need to have patience and some understanding of young people who have had a tricky start in life.

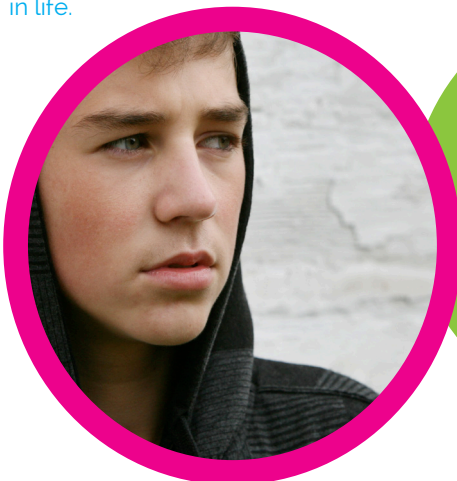
Could I apply to be a supported lodgings host?

We need people of all ages, backgrounds, religions, cultures and backgrounds, male or female. You don't need to be married, you can be single, living with a partner and be a same sex couple. You will need:

- a spare room
- be living in Oxfordshire
- live in the house and be accessible
- be a good communicator
- ability to work with others
- to welcome a young person in to your home
- commitment to offering support and guidance to young people.

You can be either working or unemployed and you do not need to be a home owner.

Give us a call to find out more now:
0800 783 5724



“Being in supported lodgings has helped me to make new friends and become more confident in myself. Its made me realise my potential and showed me how to achieve that...!”

The Next Steps

Oxfordshire County Council's Fostering Teams provide a comprehensive fostering service to meet the needs of children in Oxfordshire. We are eager to recruit more foster carers and supported lodgings carers who can provide what all children need – support, consistency, security, love and much, much more.

If you are interested in finding out more, you are welcome to give us a call on **0800 7835724** and talk to a member of the team or by emailing: fostering@oxfordshire.gov.uk

We would love to hear from you and will be happy to answer any questions you have.

Find out mo

What should I do if I want to find out more about **supported lodgings**?

We want to hear from you - call **0800 783 5724** and ask to speak to the supported lodgings social worker or email supportedlodgings@oxfordshire.gov.uk



"Every day is different they want to learn because they know that we are helping them to be the person they want to be - successful.

its a uniquely rewarding experience."

Fostering

Knights Court,
21 Between Towns Road,
Cowley, Oxford OX4 3LX

Tel: 0800 7835 724

www.oxfordshire.gov.uk/fostering



**OXFORDSHIRE
COUNTY COUNCIL**