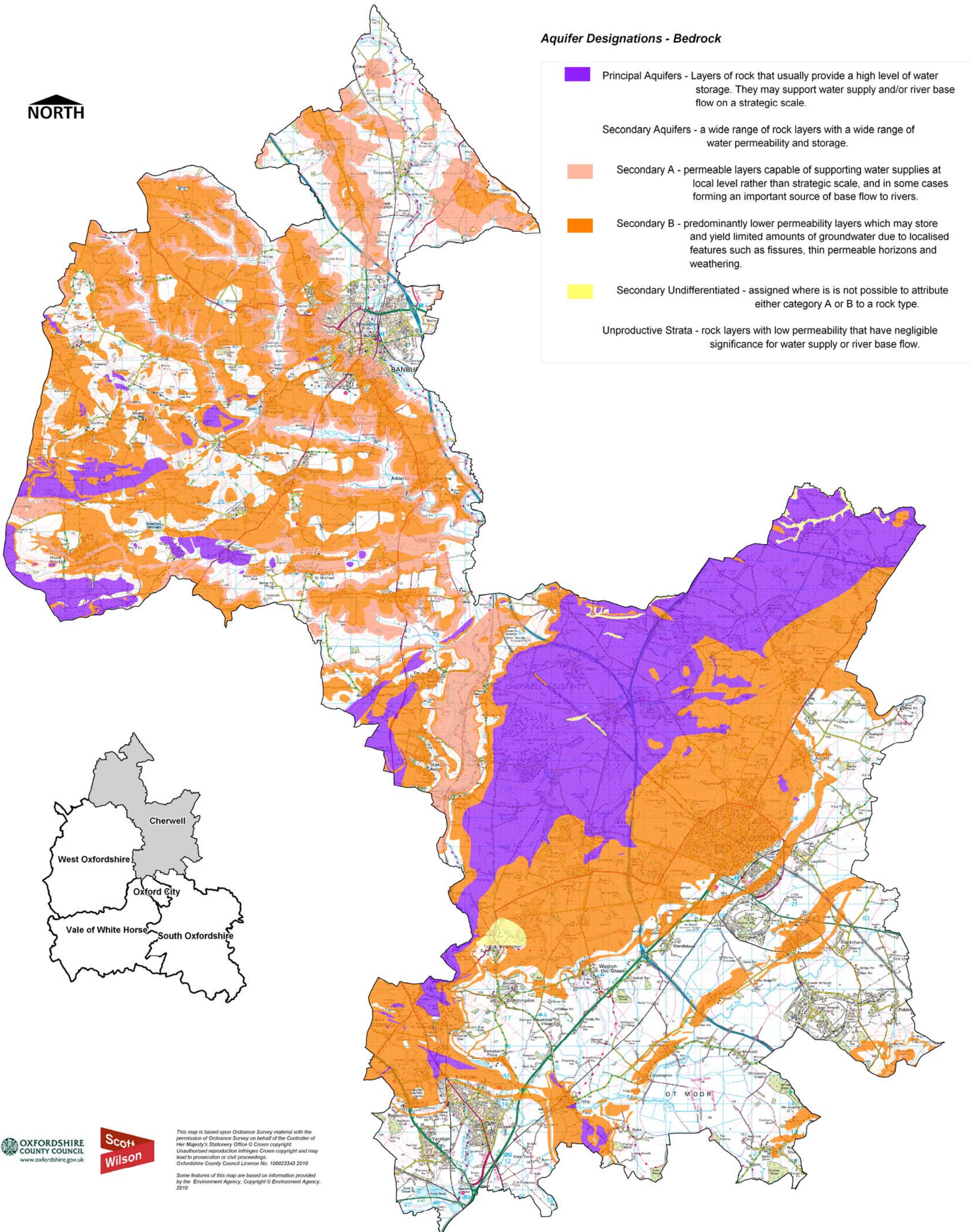


Oxfordshire County Council - Minerals and Waste Strategic Flood Risk Assessment

Bedrock Aquifer Typology

Figure E-7: Bedrock Aquifer Typology - Cherwell District



Oxfordshire County Council - Minerals and Waste Strategic Flood Risk Assessment

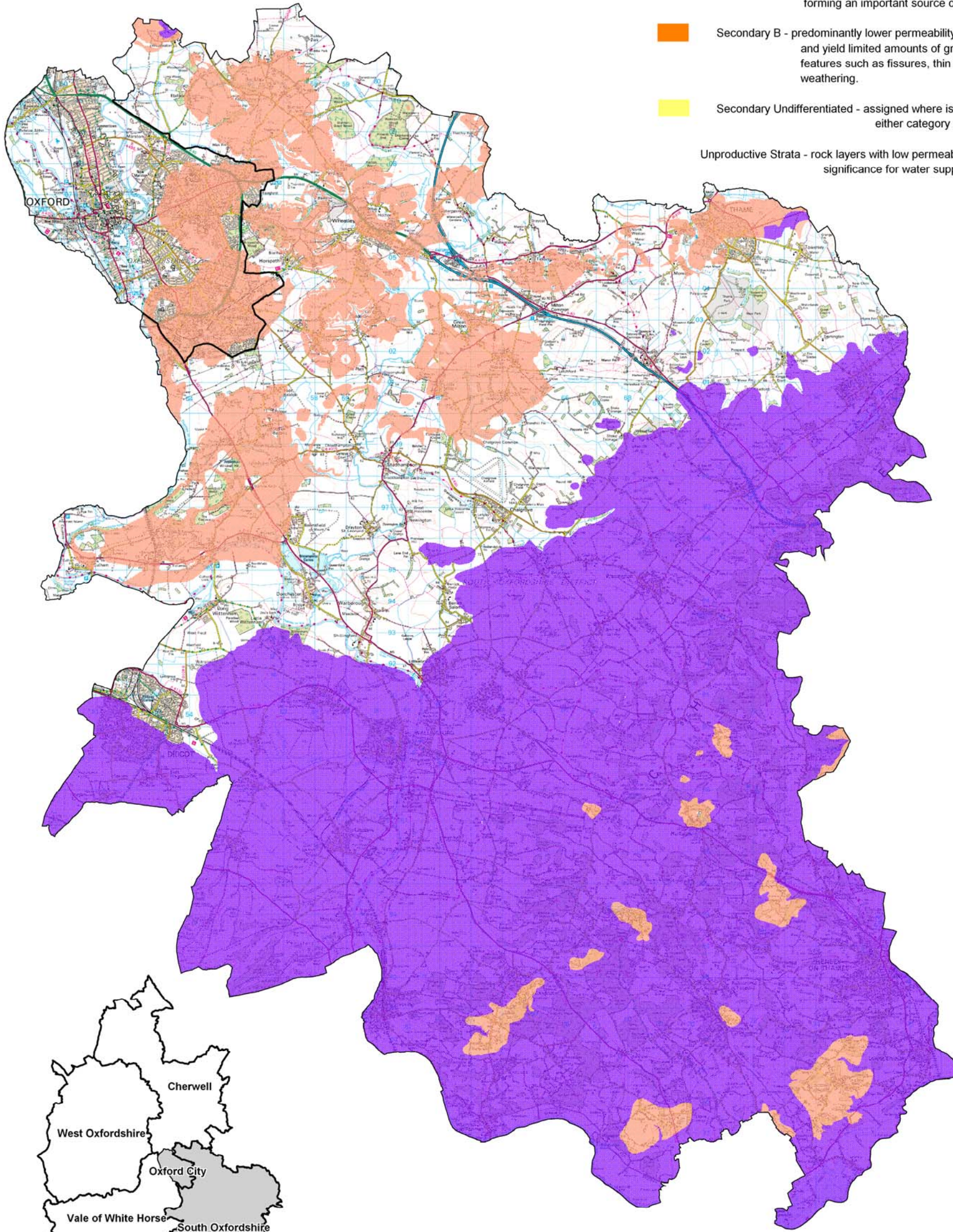
Bedrock Aquifer Typology

Figure E-8: Bedrock Aquifer Typology - South Oxfordshire District & Oxford City

Aquifer Designations - Bedrock



- Principal Aquifers - Layers of rock that usually provide a high level of water storage. They may support water supply and/or river base flow on a strategic scale.
- Secondary Aquifers - a wide range of rock layers with a wide range of water permeability and storage.
- Secondary A - permeable layers capable of supporting water supplies at local level rather than strategic scale, and in some cases forming an important source of base flow to rivers.
- Secondary B - predominantly lower permeability layers which may store and yield limited amounts of groundwater due to localised features such as fissures, thin permeable horizons and weathering.
- Secondary Undifferentiated - assigned where it is not possible to attribute either category A or B to a rock type.
- Unproductive Strata - rock layers with low permeability that have negligible significance for water supply or river base flow.



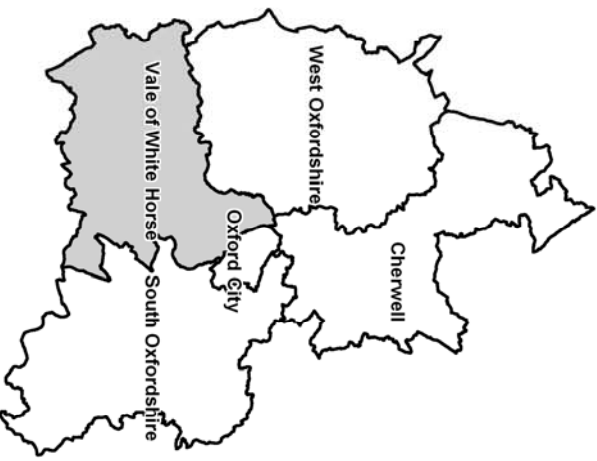
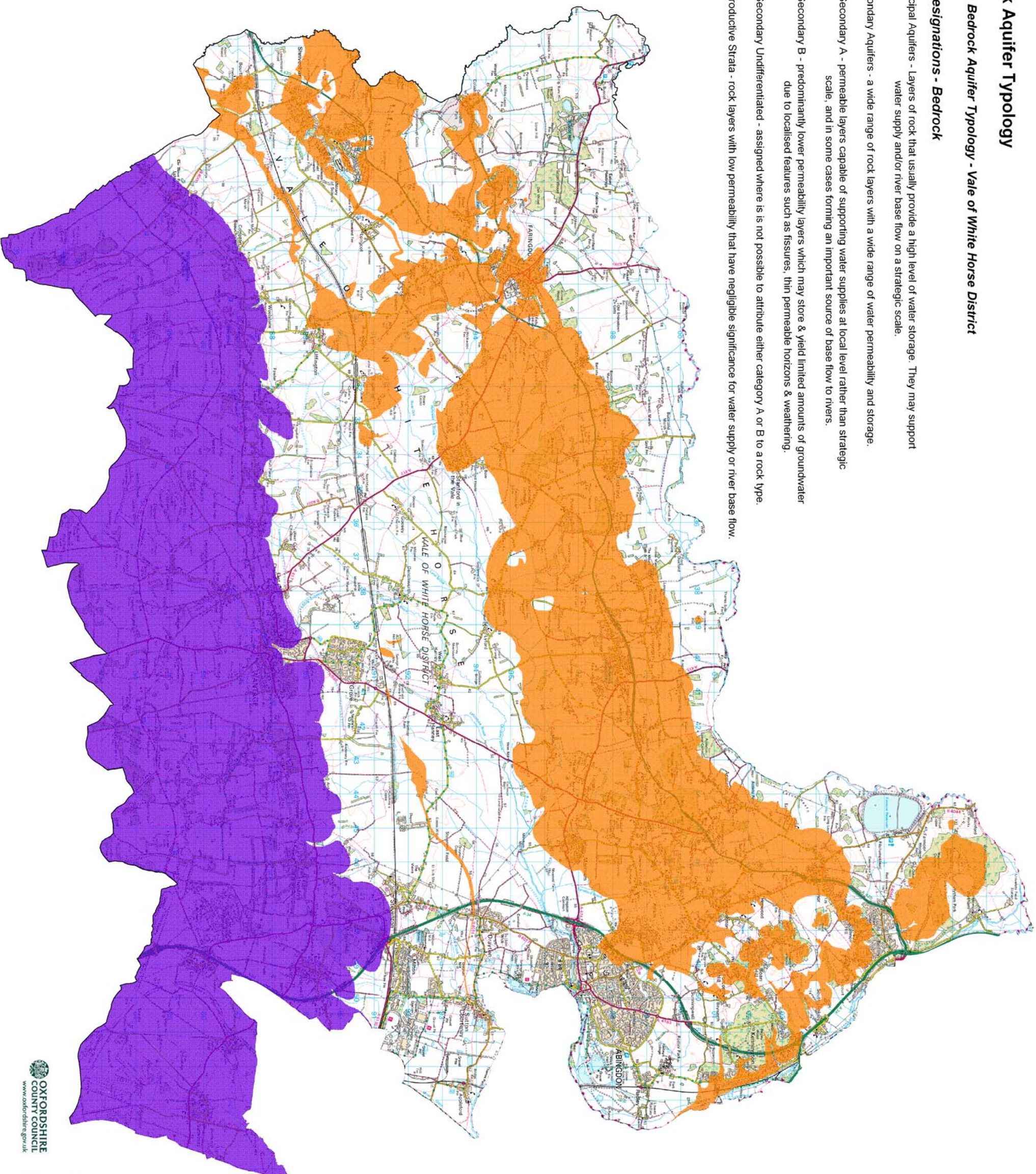
Oxfordshire County Council - Minerals and Waste Strategic Flood Risk Assessment

Bedrock Aquifer Typology

Figure E-9: Bedrock Aquifer Typology - Vale of White Horse District

Aquifer Designations - Bedrock

- **Principal Aquifers** - Layers of rock that usually provide a high level of water storage. They may support water supply and/or river base flow on a strategic scale.
- Secondary Aquifers** - a wide range of rock layers with a wide range of water permeability and storage.
 - **Secondary A** - permeable layers capable of supporting water supplies at local level rather than strategic scale, and in some cases forming an important source of base flow to rivers.
 - **Secondary B** - predominantly lower permeability layers which may store & yield limited amounts of groundwater due to localised features such as fissures, thin permeable horizons & weathering.
 - **Secondary Undifferentiated** - assigned where it is not possible to attribute either category A or B to a rock type.
- **Unproductive Strata** - rock layers with low permeability that have negligible significance for water supply or river base flow.








Oxfordshire County Council - Minerals and Waste Strategic Flood Risk Assessment

Bedrock Aquifer Typology

Figure E-10: Bedrock Aquifer Typology - West Oxfordshire District

Aquifer Designations - Bedrock

-  Principal Aquifers - Layers of rock that usually provide a high level of water storage. They may support water supply and/or river base flow on a strategic scale.
-  Secondary A - permeable layers capable of supporting water supplies at local level rather than strategic scale, and in some cases forming an important source of base flow to rivers.
-  Secondary B - predominantly lower permeability layers which may store and yield limited amounts of groundwater due to localised features such as fissures, thin permeable horizons and weathering.
-  Secondary Undifferentiated - assigned where it is not possible to attribute either category A or B to a rock type.
-  Unproductive Strata - rock layers with low permeability that have negligible significance for water supply or river base flow.

